



morton.

Zetland 723/2B Defries Avenue

 1  1  1

With respect to the latest government's COVID-19 restrictions we will be conducting open homes and private appointments with mandatory face masks, sanitisation, QR code check ins, and 1 person per 4sqm. Please submit an enquiry or contact the agent to be kept up to date with inspection times and register your attendance for viewings.

Located in the hub of Victoria Park, East Village offers resort-style apartment living with the largest private Sky Park in Sydney and instant access to a lively marketplace below and just 3kms to the CBD.

- Reverse cycle air conditioning
- Stainless steel Smeg appliances
- Soft close kitchen draws and cupboards
- Stone bench tops, mirror splash back
- LED under cupboard lighting
- Secure underground parking
- Gas bayonet to balcony for your BBQ
- Data/TV points in living and main bedroom

[morton.com.au](https://www.morton.com.au)

View

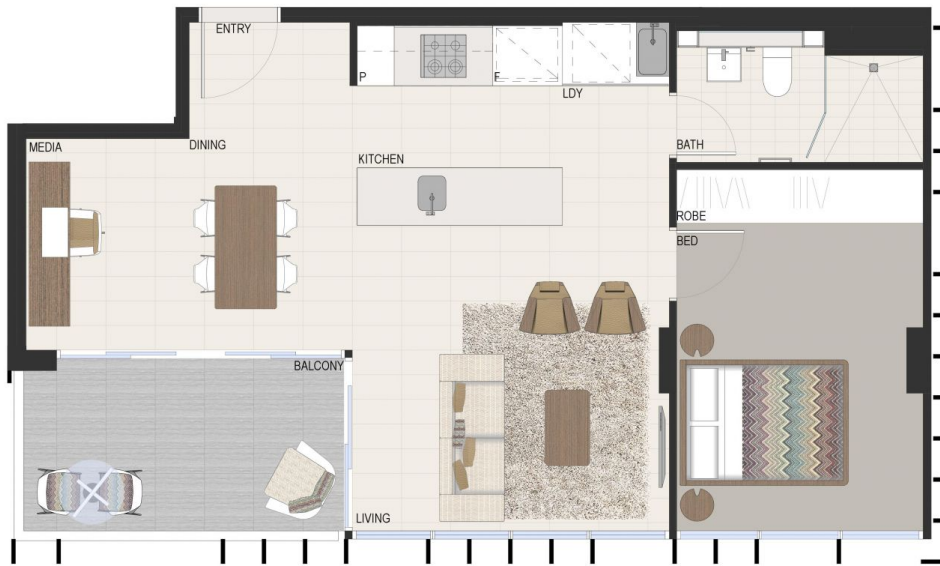
As advertised or by appointment

Agent

Kristian Karaspyros

 0436 477 102

 kristian.karaspyros@morton.com.au



Disclaimer: This floor plan has been prepared for marketing purposes only. All descriptions, dimensions, depictions and other details in this floor plan may not be to scale and may vary to the property as built. No third party has any authority to make or give any representation or warranty in relation to the property. Your attention is drawn to the special conditions of the contract for sale. **Issued 18.04.12**



723 1 bed + study
1 bath
1 parking

Internal	55sqm
External	8sqm
Total	63sqm



Proudly developed by



eastvillage.com.au
1800 888 688