



morton.

Wentworth Point 601/4 Nuvolari Place

 1  1  1

With respect to the government's restrictions around open homes and to help stop the spread of COVID-19, our properties may be viewed by appointment only and only 1 person may inspect at a time. Please submit an online enquiry or contact the listing agent for more information.

Located in Palermo, here is your opportunity to move into this very neat one bedroom apartment. A short stroll to The Piazza, local restaurants, convenience store, pharmacy, public transport off Hill Road and ferry service to Parramatta and City CBD. The Waterfront is located moments to Sydney Olympic Park main venues and train station, Bicentennial Park and Millennium Parklands.

- Located on level 6
- Tranquil balcony with lovely views overlooking Palermo landscapes
- Open plan living and dining
- Reverse cycle air conditioning
- Gourmet kitchen with plenty of cupboard space

morton.com.au

View

As advertised or by appointment

Agent

Nevena Petrovic

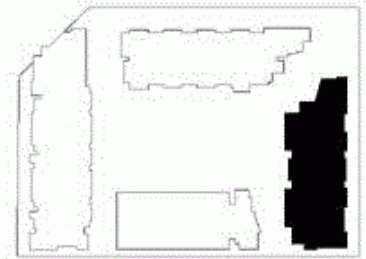
 0428 835 910

 nevena@morton.com.au

- ENTRY 1
- LIVING 2
- DINING 3
- KITCHEN 4
- BEDROOM 5
- BATHROOM 6
- LAUNDRY 7
- LINEN 8
- TERRACE 9
- CLOTHES DRYING 10



LEVEL 06



PALERMO

UNIT: **601**

TYPE: 1 Bedroom

UNIT AREA: 65.0 sqm

OUTDOOR AREA: 11.0 sqm



Disclaimer: All layouts are indicative only, and subject to change.

ALLEN JACK+COTTIER

