



# morton.

**Wentworth Point** 307/3 Stromboli Strait

 1  1  1

With respect to the government's restrictions around open homes and to help stop the spread of COVID-19, our properties may be viewed by appointment only and only 1 person may inspect at a time. Please submit an online enquiry or contact the listing agent for more information.

Located in Napoli, this well presented, spacious, light and bright one bedroom apartment is ideally located footsteps to the waterside along The Promenade, and just a short stroll to cafés and shops in The Piazza. With the complimentary Baylink shuttle linking you to Rhodes, and Wentworth Point's exclusive Pulse Club just across the road, you'll benefit from the resort style lifestyle this residence has to offer. Boasting a split level layout with balconies off the living and bedroom, be sure not to miss this opportunity.

- Covered alfresco balcony flowing off internal living area
- Full kitchen with premium stainless steel appliances, gas cooking, and ample storage
- Spacious bedroom with private balcony and walk-in



[morton.com.au](https://www.morton.com.au)

### View



As advertised or by appointment

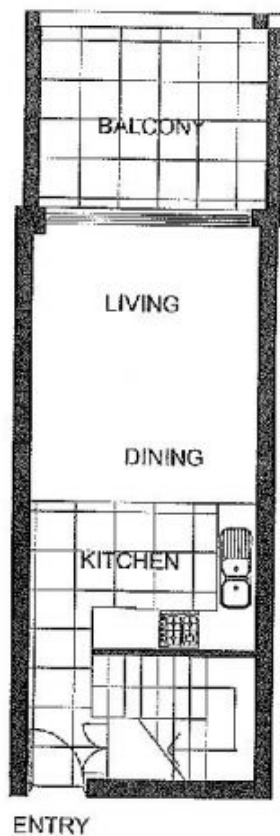
### Agents

#### Sarah Fowell

 0437 492 129  
 [rentals@morton.com.au](mailto:rentals@morton.com.au)

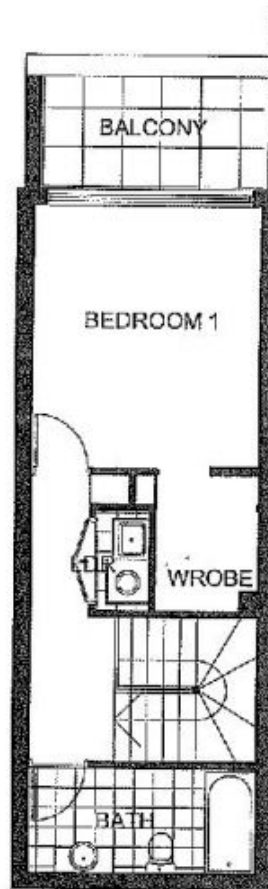
#### Nevena Petrovic

 0428 835 910  
 [nevena@morton.com.au](mailto:nevena@morton.com.au)



ENTRY

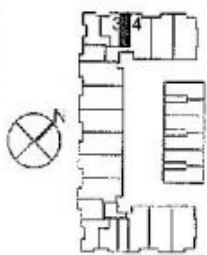
LEVEL 3



LEVEL 4



\*The information contained herein is intended as an introduction to the general content of the project and is subject to variation. Interested parties should rely on their own enquiries and the contract for sale. The developer reserves the right to vary from those descriptions as it deems necessary or as any relevant authority may require.\*



LEVEL 3



1 BEDROOM

APARTMENT 307

TYPE N

INTERNAL AREA 68 sqm

OUTDOOR AREA 15 sqm

TOTAL AREA 83 sqm

NAPOLI