



morton.

Wentworth Point 442/25 Bennelong Parkway

 2  2  1

Located in Positano at The Waterfront, here is your opportunity to move into this spacious two bedroom apartment. A short stroll to The Piazza, local restaurants, convenience store, pharmacy, public transport off Hill Road and ferry service to Parramatta and City CBD. The Waterfront is located moments to Sydney Olympic Park main venues and train station, Bicentennial Park and Millennium Parklands.

- Combined open living and dining flowing onto expansive entertainer's balcony
- Gourmet kitchen with quality appliances including dishwasher, microwave and gas cooktop, and ample storage space
- Wraparound balcony accessible from living and master bedroom
- Second bedroom with private north facing balcony
- Master bedroom with en-suite featuring bathtub
- Internal laundry with clothes dryer
- Single security undercover car space
- Pulse Club membership is also available to residents, with

View

As advertised or by appointment

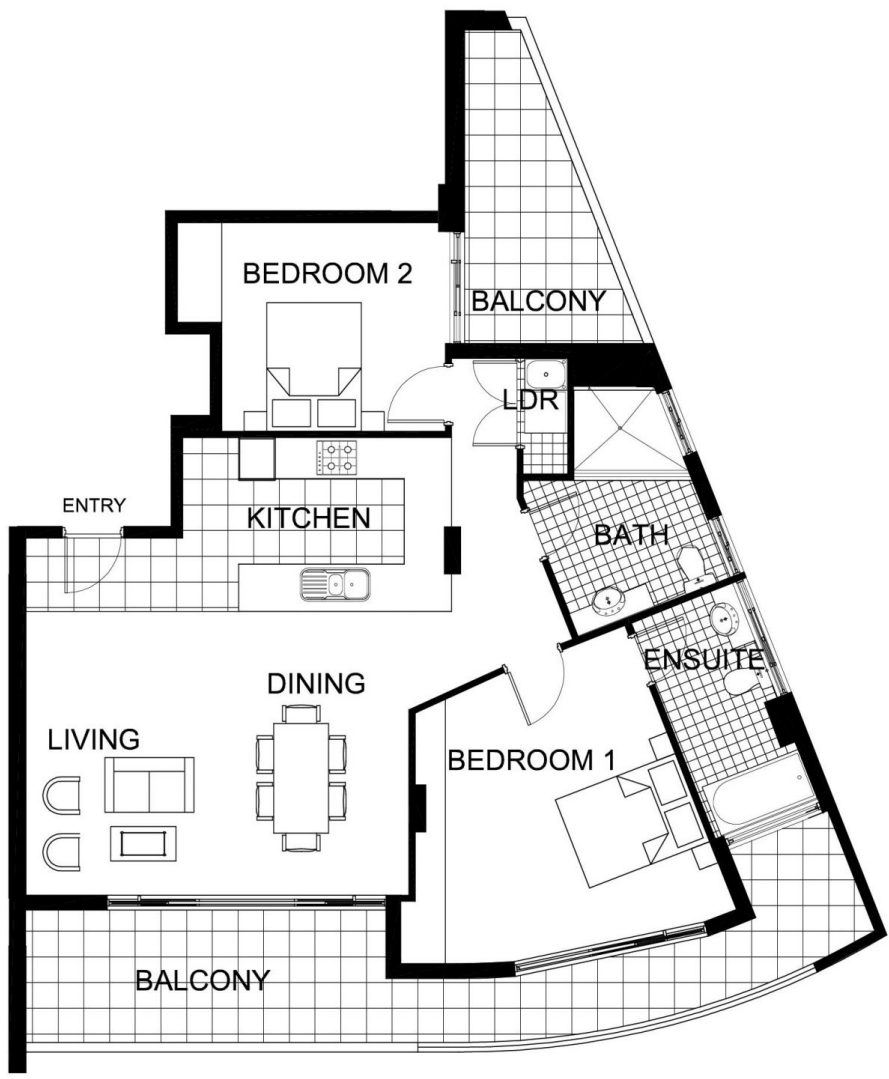
Agent

Nevena Petrovic

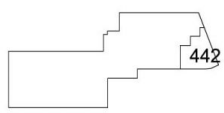
 0428 835 910

 nevena@morton.com.au

morton.com.au



"The information contained herein is intended as an introduction to the general content of the project and is subject to variation. Interested parties should rely on their own enquiries and the contract for sale. The developer reserves the right to vary from these descriptions as it deems necessary or as any relevant authority may require."



2 BEDROOM

APARTMENT 442(Exist No.4.506)

INTERNAL AREA 85 sqm

OUTDOOR AREA 24 sqm

TOTAL AREA 109 sqm



LEVEL 4.5

POSITANO