



morton.

Greenwich 10/250 Pacific Highway

 2  1  1

With respect to the government's restrictions around open homes and to help stop the spread of COVID-19, our properties can be viewed by appointment only. Please submit an online enquiry or contact the listing agent for more information.

This neat & tidy two bedroom apartment is located in a well maintained block of apartments. With a leafy outlook overlooking Longueville and Riverview, this peaceful and convenient home is perfectly suited for professionals, small families, or down-sizers.

- Open plan living and dining flows through to sunlit balcony
- Queen size bedrooms, main with built-in wardrobe and private balcony
- Modern Kitchen with dishwasher and fridge
- Tiled bathroom with separate bathtub and shower recess
- Internal laundry with dryer
- Large single car car space

View

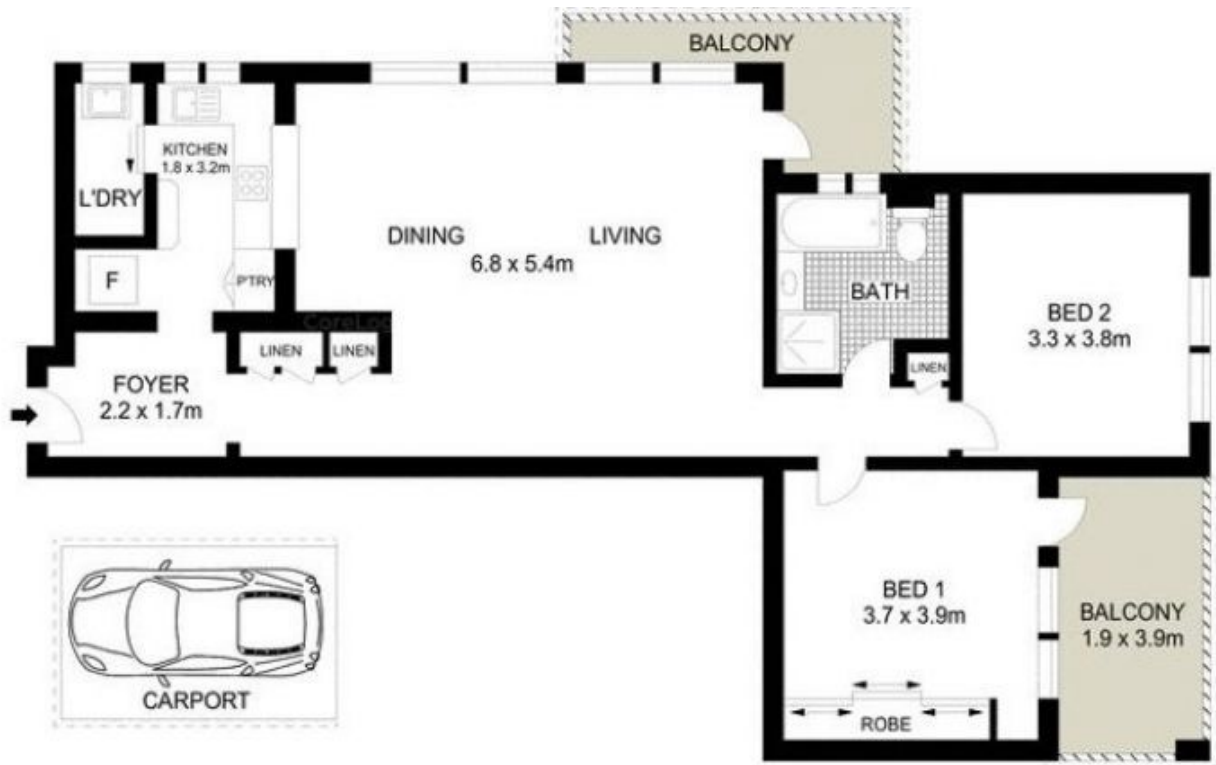
As advertised or by appointment

Agent

Morton

  info@morton.com.au

morton.com.au



SECOND FLOOR

