



**morton.**

**Little Bay** 403/1-5 Pine Avenue

 1  1  1

Featuring the prized top floor position and offering views from Botany Bay to the CBD, this is an opportunity not to be missed. With high quality finishes throughout coupled with a beach side location it is the ideal place to call home.

- Open floor plan setting
- Top floor with skylight
- Stainless steel appliances
- Stone bench tops
- Wool carpets throughout
- Security building with lift access

**View**

As advertised or by appointment

**Agent**

**Sarah Fowell**

 0437 492 129

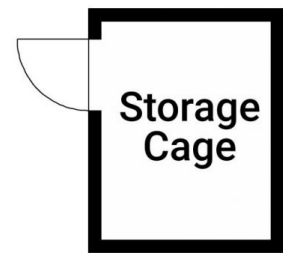
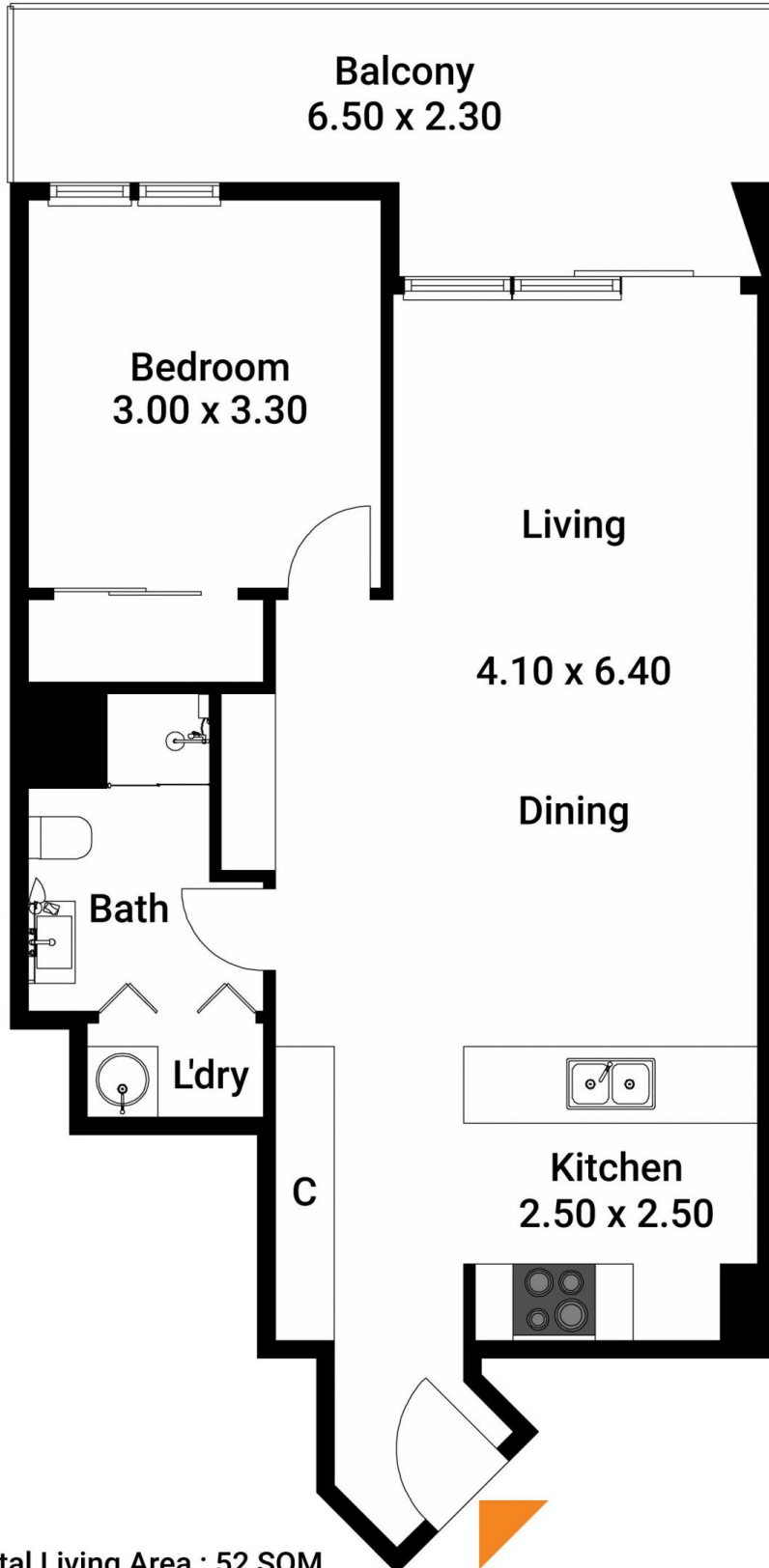
 sarah@morton.com.au

[morton.com.au](http://morton.com.au)

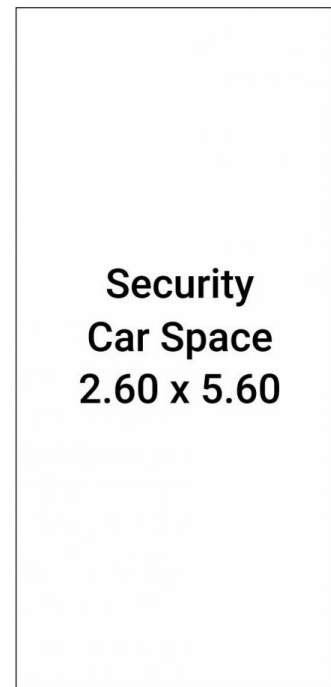


The interior style and design of this floor plan is designed for inspiration purposes to show the living spaces. It is not an exact replica of the furniture and fittings in the home.

Produced by DIAKRIT



(Not In Position)



(Not In Position)

Total Living Area : 52 SQM

The floor plan is not to scale. Measurements are indicative and in metres.

Produced by DIAKRIT