



morton.

Wentworth Point 720/25 Bennelong Parkway

 2  2  2

With respect to the government's restrictions around open homes and to help stop the spread of COVID-19, our properties may be viewed by appointment only and only 1 person may inspect at a time. Please submit an online enquiry or contact the listing agent for more information.

The Waterfront is located moments to Sydney Olympic Park main venues, train station, Bicentennial Park and Millennium Parklands. Located in Positano, this is your opportunity to move into this two bedroom apartment only a short stroll from The Promenade and The Piazza.

Property features include:

- Glistening water views
- Located on level 7
- Gourmet kitchen with plenty of cupboard space
- Quality stainless steel appliances and gas cooking
- Spacious split level apartment with cross-flow ventilated design
- Good size bedrooms with built-in wardrobes

morton.com.au

View

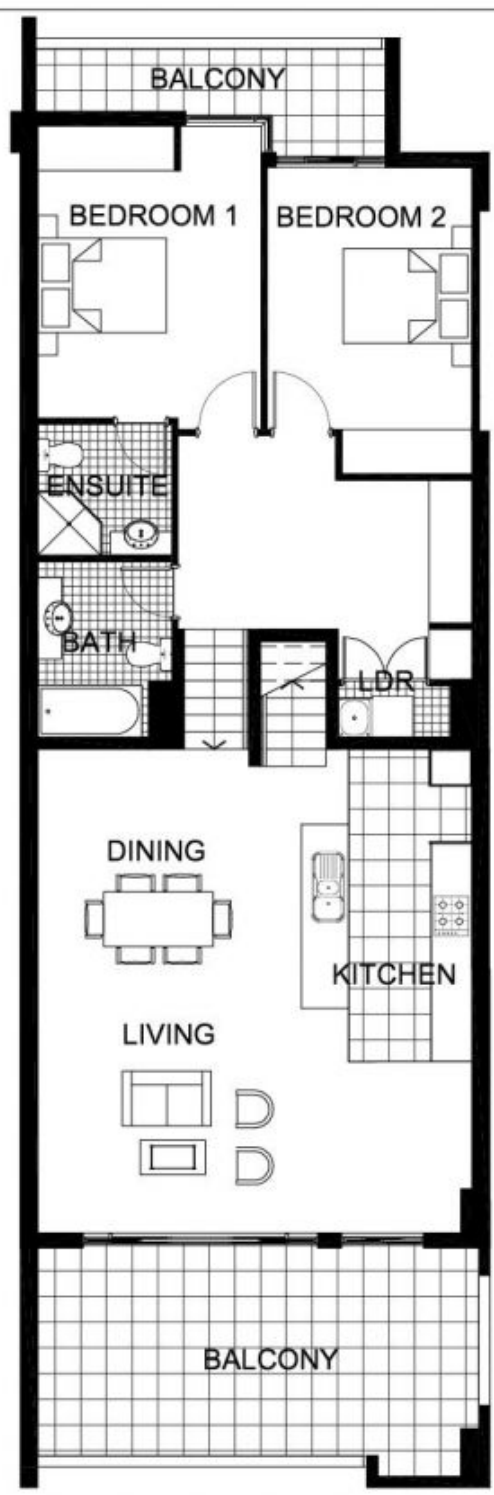
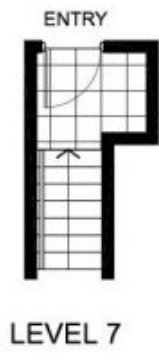
As advertised or by appointment

Agent

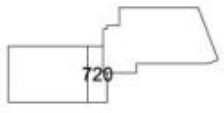
Nevena Petrovic

 0428 835 910

 nevena@morton.com.au



The information contained herein is intended as an introduction to the general content of the project and is subject to variation. Interested parties should rely on their own enquiries and the contract for sale. The developer reserves the right to vary from these descriptions as it deems necessary or as any relevant authority may require.



THE WATERFRONT
AT HOMEBUSH BAY

2 BEDROOM **APARTMENT 720(Exist No.605)**

INTERNAL AREA 104sqm OUTDOOR AREA 24 sqm TOTAL AREA 128 sqm



POSITANO