



**morton.**

**Wentworth Point** 430/25 Bennelong Parkway

 1  1  1

With respect to the government's restrictions around open homes and to help stop the spread of COVID-19, our properties may be viewed by appointment only and only 1 person may inspect at a time. Please submit an online enquiry or contact the listing agent for more information.

The Waterfront is located moments to Sydney Olympic Park main venues, train station, Bicentennial Park and Millennium Parklands. Located in Positano, this is your opportunity to move into this one bedroom apartment only a short stroll from The Promenade and The Piazza.

Property features include:

- Located on level four with partial water views
- Generous floorplan 91sqm in total
- Two balconies perfect for entertaining
- Spacious open plan living and dining room
- Reverse cycle air conditioning
- Good size L-shaped kitchen with plenty of storage
- Gas cooking & quality stainless steel appliances

**morton.com.au**

**View**

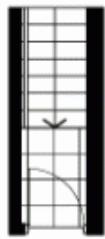
As advertised or by appointment

**Agent**

**Nevena Petrovic**

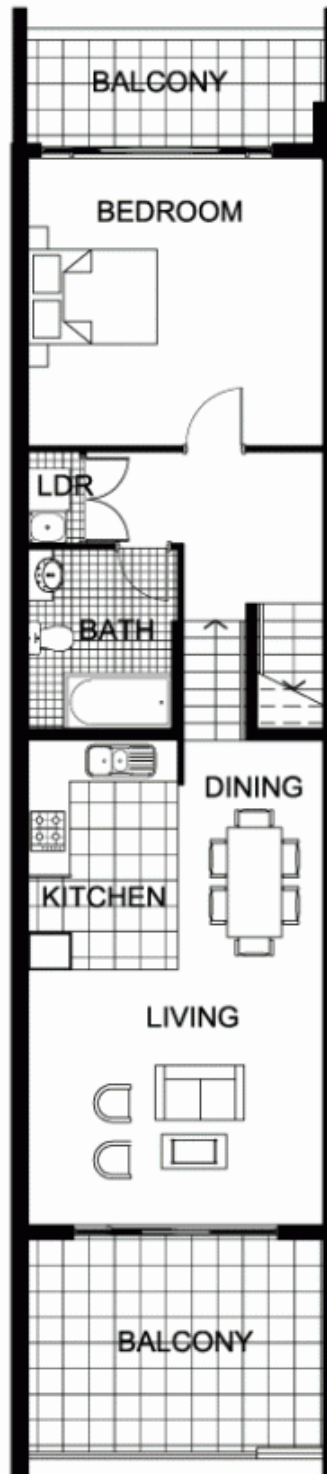
 0428 835 910

 nevena@morton.com.au



ENTRY

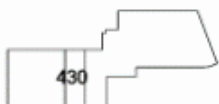
LEVEL 4.5



LEVEL 4



"The information contained herein is intended as an introduction to the general content of the project and is subject to variation. Interested parties should rely on their own enquiries and the contract for sale. The developer reserves the right to vary from these descriptions as it deems necessary or as any relevant authority may require."



**THE WATERFRONT**  
AT HOMEBUSH BAY

**1 BEDROOM**

**APARTMENT 430(Exist No.404)**

INTERNAL AREA 71 sqm

OUTDOOR AREA 20 sqm

TOTAL AREA 91 sqm



LEVEL 4

**POSITANO**