

morton.

Redfern 310/199 Regent Street



With respect to the government's restrictions around open homes and to help stop the spread of COVID-19, our properties can be viewed by appointment only. Please submit an online enquiry or contact the listing agent for more information.

A converted warehouse opened up to make the most of its vast space, this home offers the perfect layout. With easy access to everything Redfern and the City has to offer, it's in one of Redfern's finest buildings with a rooftop entertaining deck.

- Converted warehouse with a big sense of space
- Renovated with high-end finishes throughout
- Tiled floors & double-height ceilings
- Large kitchen with stone benchtops and stainless steel appliances
- Living area opens to a covered entertaining balcony
- Large wine fridge installed for the connoisseur within you
- Beautifully appointed bathroom with separate shower and

View

As advertised or by appointment

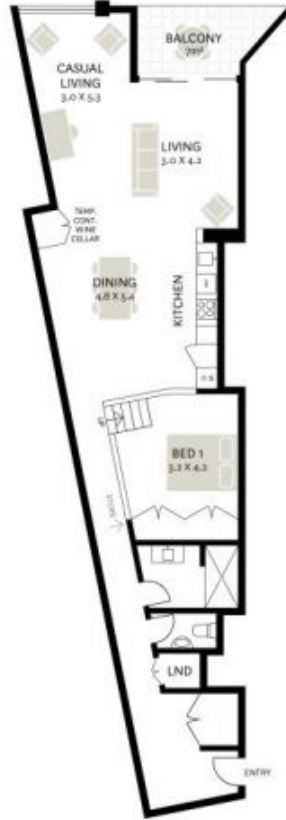
Agent

Sarah Fowell

📞 0437 492 129

✉️ sarah@morton.com.au

[morton.com.au](https://www.morton.com.au)



WE BELIEVE THE INFORMATION IN THIS DOCUMENT TO BE RELIABLE, HOWEVER INTERESTED PERSONS SHOULD MAKE THEIR OWN ENQUIRIES. DIMENSIONS ARE APPROXIMATE.