



# morton.

**Jordan Springs** D203/76-94 Lakeside Parade

🛏 1 🚿 1 🚗 1

Jordan Springs' newest residential project will soon be here with the exclusive Kala boutique development of 41 luxurious home-like apartments. This architect-created community, is destined to set new standards in the area for design quality and style; featuring generous interior proportions with high-end inclusions and tranquil outlooks over the lake and national park.

- Choose from a selection of 1,2 or 3 beds from \$418,000
- Plenty of storage in the gas kitchen with selected apartments including 1.5 sinks, waterfall 40mm stone island bench, large fridge cavity, Fisher & Paykel appliances
- Light and breezy open plan living with engineered timber floorboards and Samsung air con
- Large carpeted master bedroom with air con, 2-3 beds with large ensuite and mirrored robes
- Entertainers balcony, some with a north aspect overlooking the lake.
- All wet areas are tiled with porcelain concrete-look tiles, even the bathrooms have ample storage with a bathtub.

[morton.com.au](http://morton.com.au)

### View

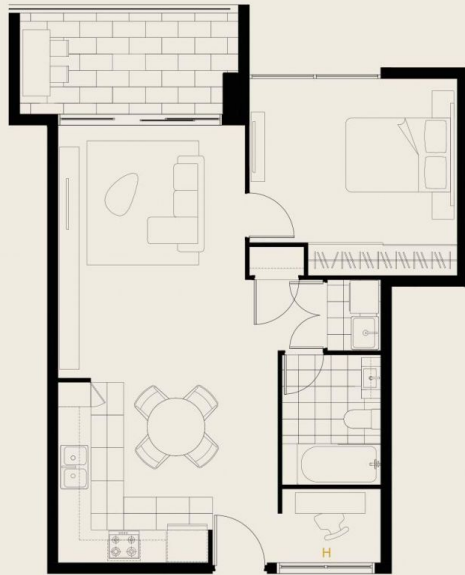
As advertised or by appointment

### Agent

**David Lipman**

📞 0409 663 535

✉ david@morton.com.au



ABBREVIATIONS  
 H Highlight window (1800mm sill)

DISCLAIMER: Please note that this Level plan was produced prior to construction. The information herein is believed to be correct but is not guaranteed. Changes may be made during construction and dimensions, areas, fittings and specification are subject to change without notice in accordance with the provisions of the contract for sale. The furniture and furnishings depicted are not included with any sale and purchasers must refer to the contract for sale of the list of inclusions. The position of the furniture and furnishings should not be taken to be indicative of final positions of power points, TV connection points and the like. Prospective purchasers must rely on their own enquiries. All graphics including tile layout, balustrades and the like are indicative only. Bulkheads for services are not depicted. All areas sizes indicated are approximate only and are subject to final survey.

# KALA

JORDAN SPRINGS

## Dilkara

D203 D303 D403



Internal	55m <sup>2</sup>
External	7m <sup>2</sup>
<b>Total</b>	<b>62m<sup>2</sup></b>

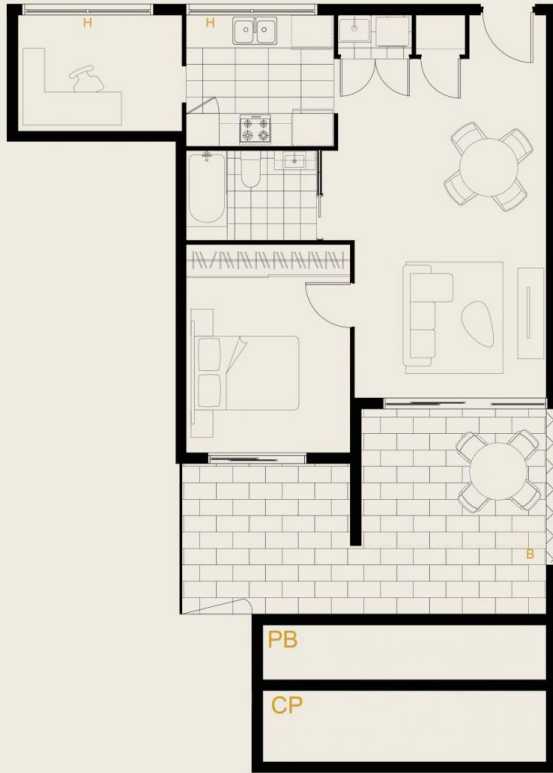


Lakeside Parade  
 National Park



Call 1300 56 41 41  
[kalajordansprings.com.au](http://kalajordansprings.com.au)  
 76 Lakeside Parade, Jordan Springs, NSW

Proudly developed & built by  
**coplex**



**ABBREVIATIONS**

**H** Highlight window (1800mm sill)

**PB** Planter Box/Landscaping

**CP** Common property planter box/landscaping

**B** Line of balcony over Courtyard

**DISCLAIMER:** Please note that this Level plan was produced prior to construction. The information herein is believed to be correct but is not guaranteed. Changes may be made during construction and dimensions, areas, fittings and specification are subject to change without notice in accordance with the provisions of the contract for sale. The furniture and furnishings depicted are not included with any sale and purchasers must refer to the contract for sale of the list of inclusions. The position of the furniture and furnishings should not be taken to be indicative of final positions of power points, TV connection points and the like. Prospective purchasers must rely on their own enquiries. All graphics including tile layout, balustrades and the like are indicative only. Bulkheads for services are not depicted. All areas sizes indicated are approximate only and are subject to final survey.

# KALA

JORDAN SPRINGS

## Dilkara D104

1 1 1

Internal 55m<sup>2</sup>

External 27m<sup>2</sup>

**Total 82m<sup>2</sup>**

Lake



Lakeside Parade  
National Park



Call 1300 56 41 41

[kalajordansprings.com.au](http://kalajordansprings.com.au)  
76 Lakeside Parade, Jordan Springs, NSW

Proudly developed & built by

**coplex**