



morton.

Zetland 203/2 Victoria Park Parade

 2  2  1

A stylish offering of light and flowing space.

In the heart of exclusive Victoria Park, one of the East's most desirable lifestyle communities, this stylish residence sits in the celebrated 'Stella' building. Designed by the renowned Tzannes Associates, the home is crafted to maximise the interplay between natural light and flowing space.

- With expansive and inviting open plan entertaining areas
- Double bedrooms both come with built-in wardrobes
- Integrated CaesarStone kitchen boasts gas appliances
- Chic bathroom, frameless glass shower, Italian finishes
- Cooled by coveted cross breezes, halogen lighting
- A low maintenance lifestyle opportunity like no other
- Video intercom, storage cage, floating polished floors

View



As advertised or by appointment

Agents

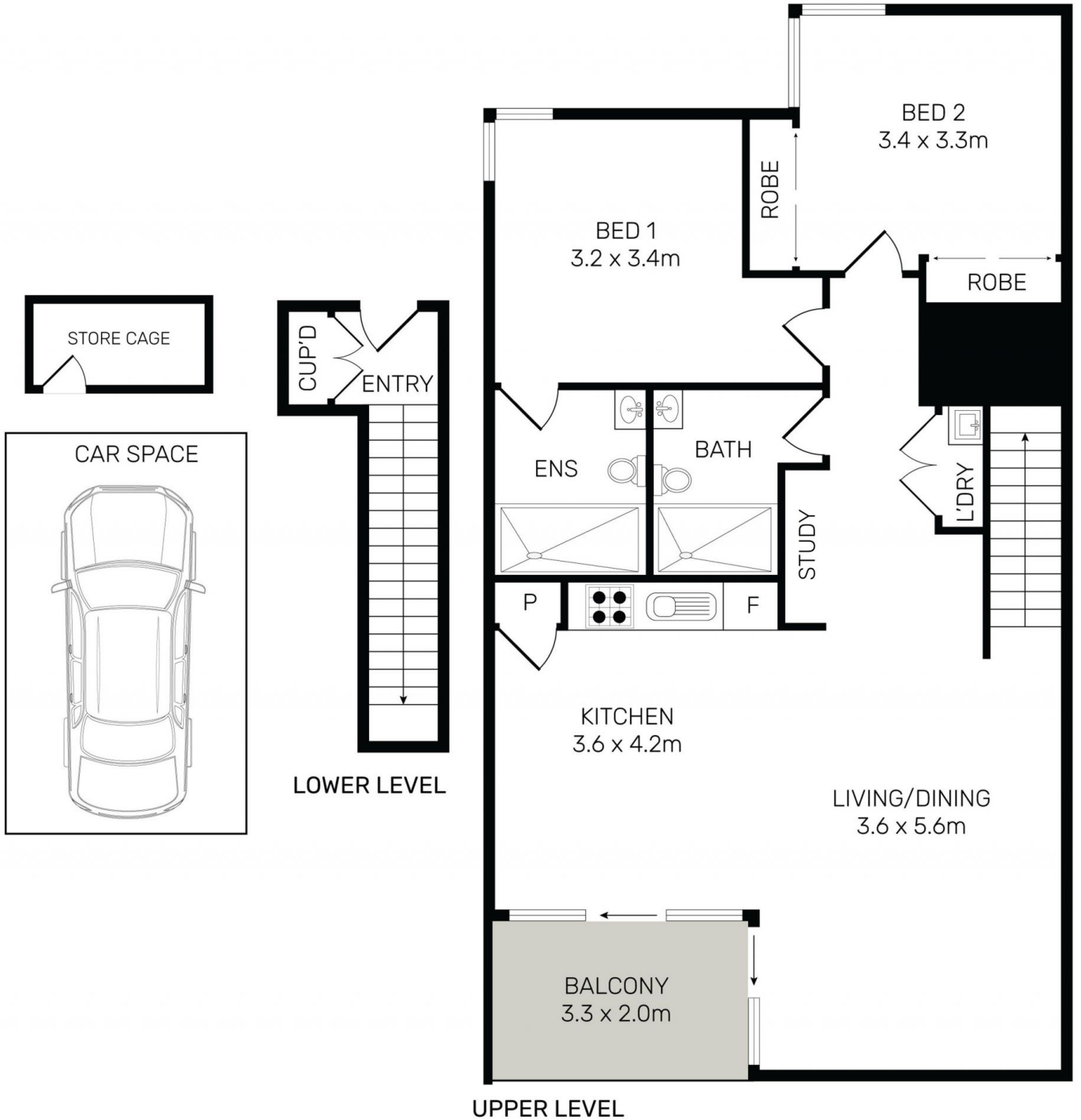
Calvin Chan

 0406 888 028
 calvin@morton.com.au

Jackson Figueiras

 0448 764 345
 jackson@morton.com.au

morton.com.au



All information contained herein is gathered from all sources we believe to be reliable. However we cannot guarantee its accuracy and interested parties should rely on their own enquiries.



CampaignPROS

morton.

Zetland 203/2 Victoria Park Parade