



morton.

Wentworth Point 127/27 Bennelong Parkway

 2  1  1

With respect to the latest government's COVID-19 restrictions we will be conducting open homes and private appointments with mandatory face masks, sanitisation, QR code check ins, and 1 person per 4sqm. Please submit an enquiry or contact the agent to be kept up to date with inspection times and register your attendance for viewings.

View

As advertised or by appointment

Agent

Nevena Petrovic

 0428 835 910

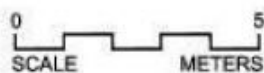
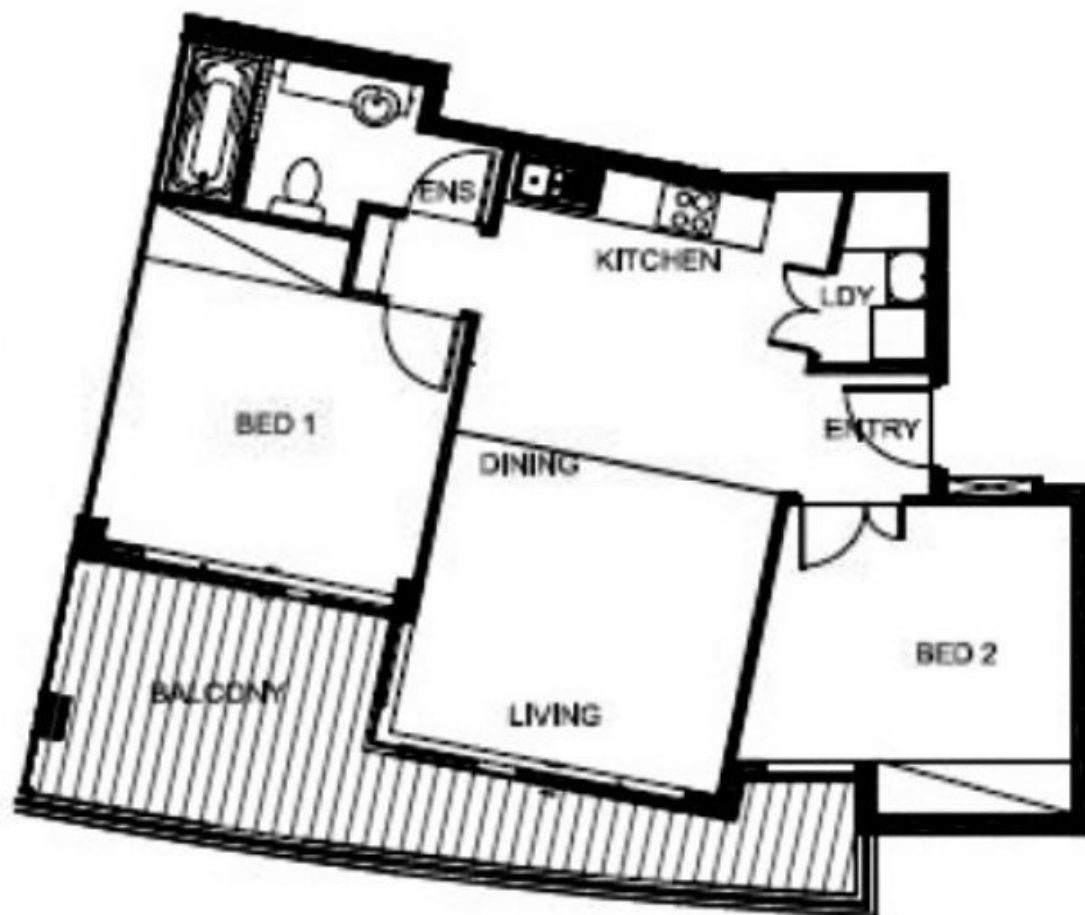
 nevena@morton.com.au

Well positioned in the Spinnaker building of the waterfront Mariners Cove complex, this two bedroom apartment has an abundance of natural light from its spacious entertainer's balcony, offering a serene unobstructed view overlooking Sydney Olympic Park and the Archery Centre. This is the perfect abode for the working professional looking for a tranquil resort style home, positioned by the waterside, with easy access to amenities. Mariners Cove features exclusive residents only swimming pools, gym and steam room.

Property features include:

- Brand new timber flooring & freshly painted
- Open plan living and dining leading to entertainer's balcony

morton.com.au



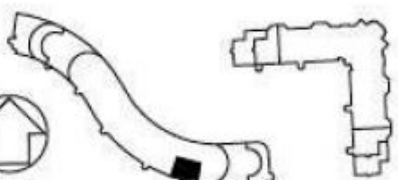
DISCLAIMER

NO RESPONSIBILITY TAKEN FOR INFORMATION PROVIDED HEREIN.
INTERESTED PARTIES SHOULD RELY ON THEIR OWN ENQUIRIES
AND THE CONTRACT FOR SALE. CARPARK AREAS NOT INCLUDED.
REFER TO STRATA PLANS FOR ADDITIONAL INFORMATION.

APARTMENT 127

2 BEDROOM

INTERNAL AREA 61 sqm
EXTERNAL AREA 17 sqm
TOTAL AREA 78 sqm



MARINERS COVE

RESIDENTIAL APARTMENTS