



morton.

Zetland 823/2B Defries Avenue

 1  1  1

With respect to the government's restrictions around open homes and to help stop the spread of COVID-19, our properties can be viewed by appointment only. Please submit an online enquiry or contact the listing agent for more information.

Located in the hub of Victoria Park, East Village offers resort-style apartment living with the largest private Sky Park in Sydney and instant access to a lively marketplace below and just 3kms to the CBD.

- Reverse cycle air conditioning
- Stainless steel Smeg appliances
- Soft close kitchen draws and cupboards
- Stone bench tops, mirror splash back
- LED under cupboard lighting
- Wool carpets, efficient LED down lights
- Gas bayonet to balcony for your BBQ
- Data/TV points in living and main bedroom
- Recessed mirrored cabinets in bathroom

morton.com.au

View

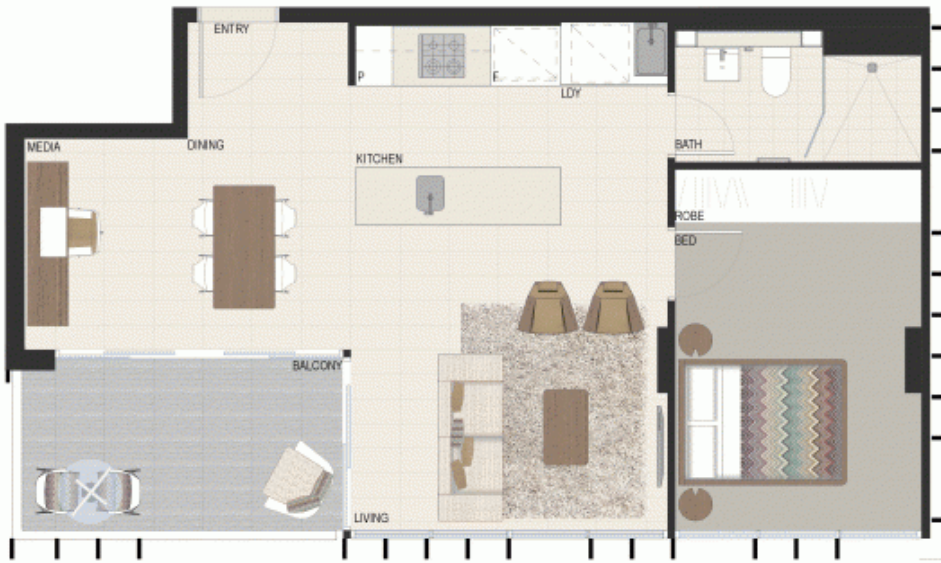
As advertised or by appointment

Agent

Sarah Fowell

 0437 492 129

 sarah@morton.com.au



Disclaimer: This floor plan has been prepared for marketing purposes only. All descriptions, dimensions, depictions and other details in this floor plan may not be to scale and may vary to the property as built. No third party has any authority to make or give any representation or warranty in relation to the property. Your attention is drawn to the special conditions of the contract for sale. **Insud 262412**



823 1 bed + study
1 bath
1 parking

Internal	55sqm
External	8sqm
Total	63sqm



eastvillage.com.au
1800 888 688