



morton.

Penrith 123/1-39 Lord Sheffield Circuit

 1  1  1

Located in the hub of North Penrith, Harts Landing offers contemporary urban living in a master planned vibrant community called Thornton Estate. Only metres from Penrith train station, Westfield shopping centre and local parks.

Features Include:

- Tiled open living and dining area, efficient LED lighting throughout
- Reverse cycle air conditioning, block-out roller blinds throughout
- Stylish kitchen with stone bench-tops, soft close drawers & cupboards
- Four burner stove top, stainless steel dishwasher, microwave and oven
- NBN ready, Data/TV/PayTV points in living & bedroom
- Wool-blend carpeted bedrooms with mirrored built-in robes
- Large quality bathroom with mirrored vanity cabinet
- Internal laundry with dryer

View

As advertised or by appointment

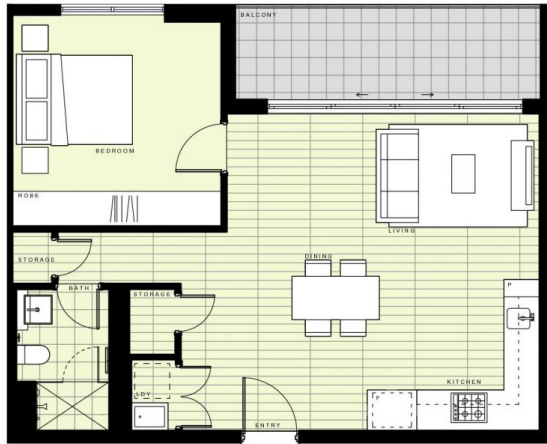
Agent

Anthony Fleming

 0437 929 484

 anthonyf@morton.com.au

morton.com.au



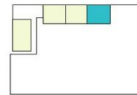
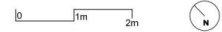
BUILDING A

LEVEL 1

APARTMENT A123 LOT 4

1 BEDROOM

INTERNAL AREA 54m²
EXTERNAL AREA 8m²
TOTAL 62m²



Disclaimer: This floor plan has been prepared for marketing purposes only. All descriptions, dimensions, depictions and other details in this floor plan may not be to scale and may vary from the property as built. Your attention is drawn to the special conditions of the contract for sale of land. No third party has any authority to make or give any representation or warranty in relation to the property unless the representation or warranty is confirmed by the vendor and included in the contract for sale of land. Revised floor plans - 14.08.18

CALL 1300 548 588
HARTSLANDING.COM.AU
LORD SHEFFIELD CIRCUIT, PENRITH
LINK DISPLAY SUITE
22 GADIGAL AVENUE, ZETLAND

PROUDLY DEVELOPED BY **PAYCE** SALES BY **LINK**