



# morton.

**Pyrmont** 1504/45 Bowman Street

 2  2  1

Occupying a magnificent setting high in the exclusive 'The Distillery' located in the prized Jacksons Landing precinct, this exceptional residence is the very definition of designer living. Finished to an exacting standard with the finest of appointments, panoramic views stretch across White Bay and Balmain to the distant Blue Mountains.

- Oriented to embrace natural afternoon sunlight
- Inviting living areas open to a protected balcony
- Double bedrooms with built-ins, master has ensuite
- CaesarStone kitchen boasts Smeg gas appliances
- Chic ensuite with bath and frameless glass shower
- Views stretch across Blackwattle Bay to North Sydney
- Ducted air conditioning, secure parking and storage cage
- On site timber decked outdoor pool and gym

### View



As advertised or by appointment

### Agents

#### Ian Qiu

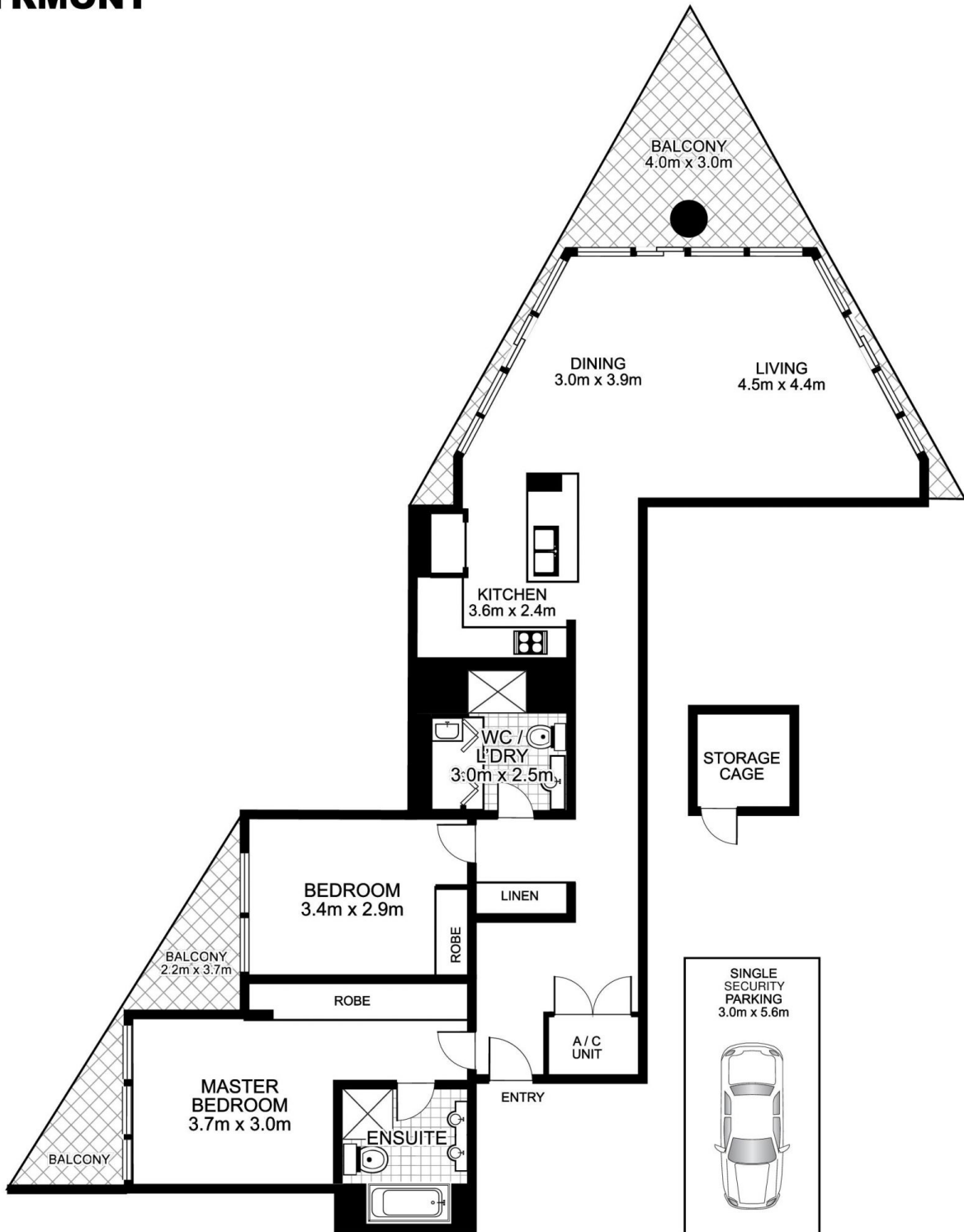
 0447 696 425  
 [ian@morton.com.au](mailto:ian@morton.com.au)

#### Natasha Giannone

 0438 683 859  
 [natasha@morton.com.au](mailto:natasha@morton.com.au)

[morton.com.au](http://morton.com.au)

# 1504/45 Bowman Street, PYRMONT



FIFTEENTH FLOOR



Plans by  
**surroundpix**  
com.au  
1300 30 32 40

This floor plan is intended as a guide only. Layout dimension are approximate only. No representation or warranties of any nature whatsoever are given or intended. Any person using this information should rely on their own enquiries.