



**morton.**

**Macquarie Park** 1211/13 Halifax Street

 2  1  1

With respect to the government's restrictions around open homes and to help stop the spread of COVID-19, our properties can be viewed by appointment only. Please submit an online enquiry or contact the listing agent for more information.

Great opportunity to lease this luxury two-bedroom apartment located in Nexus building, NBH at Lachlan's Line. This iconic development perfectly positioned above a bustling town square at the heart of the new Lachlan's Line master plan.

- Generous open plan lounge with breathtaking views
- Quality designer gas kitchen with Miele appliances
- Good sized bedrooms with built-in robe, abundance of natural light
- Large entertainer's balcony off lounge and bedroom
- Sleek bathroom has floor to ceiling tiles, mirrored vanity cabinets
- One car space and storage cage, security access
- Video intercom, laundry with dryer, air-conditioning, NBN

**morton.com.au**

**View**

As advertised or by appointment

**Agent**

**Morton**

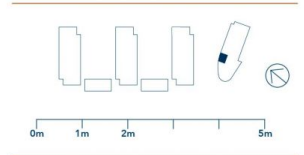
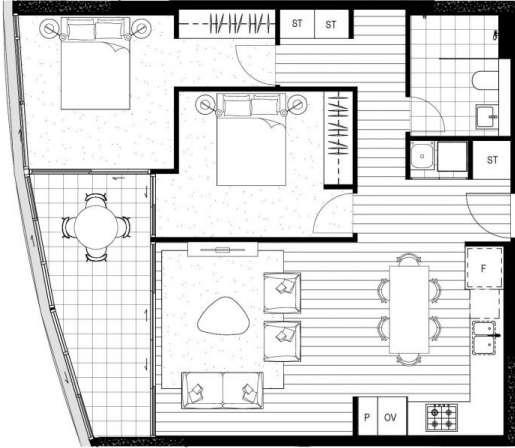
  info@morton.com.au



2B.10	
Internal Area	72-76m <sup>2</sup>
External Area	9-11m <sup>2</sup>
Total Area	81-87m <sup>2</sup>

NEXUS

3.11, 5.11, 6.11, 7.11, 8.11, 9.11, 10.10, 11.11, 12.11, 13.11, 15.11, 16.11, 17.11, 18.10, 19.10



NBHSYDNEY.COM 1800 388 788

REV D\_01.06.18

Refer to General Arrangement Plans for specific unit locations, orientation and context. Note that all graphics including balustrades, glazing units, door units and the like should be taken to be indicative only. Window locations and operable window and door units are shown as indicative only and are subject to change. Ducts and air-conditioning units and their locations are shown as minimal and are subject to change. Floor plans are at an unspecified scale. All internal and external unit areas and sizes are indicated as approximate only and are subject to final strata survey. \*Varies - possible window position for each individually listed unit only. Refer to the General Arrangement Plans for exact window and door positions for each individual unit. Please note that this floor plan was produced prior to construction. The information here is believed to be correct but is not guaranteed. Changes may be made during construction and dimensions, areas, fittings and specification are subject to change without notice in accordance with the provisions of the contract for sale. The furniture and furnishings depicted are not included with and sale and purchase must refer to the contract for sale for a list of inclusions. The position of furniture and furnishings should not be taken to be indicative of final positions of power points, TV connection points and the like. Prospective purchasers must rely on their own enquiries. Bulkheads for services are not depicted.