



morton.

Sydney 805/45 Shelley Street

 2  2  1

With respect to the government's restrictions around open homes and to help stop the spread of COVID-19, our properties will be open by appointment only. Please contact the listing agent for more information.

This is a wonderful chance to secure a top floor, north facing fully furnished executive two bedroom apartment located at the prestigious King Street Wharf development. This apartment's practical design allows for great ventilation and offers complete privacy, with sparkling harbour vistas spanning from Pyrmont across to Balmain.

- Sun soaked living area with plenty of natural light
- Large private balcony, floor to ceiling glass
- Spacious double bedrooms with built ins, master with ensuite
- Sleek kitchen is finished with high quality appliances
- Designer bathroom has a concealed laundry with dryer
- Security building, audio visual intercom and security access
- Moments from the CBD and Sydney's vibrant Darling Harbour

morton.com.au

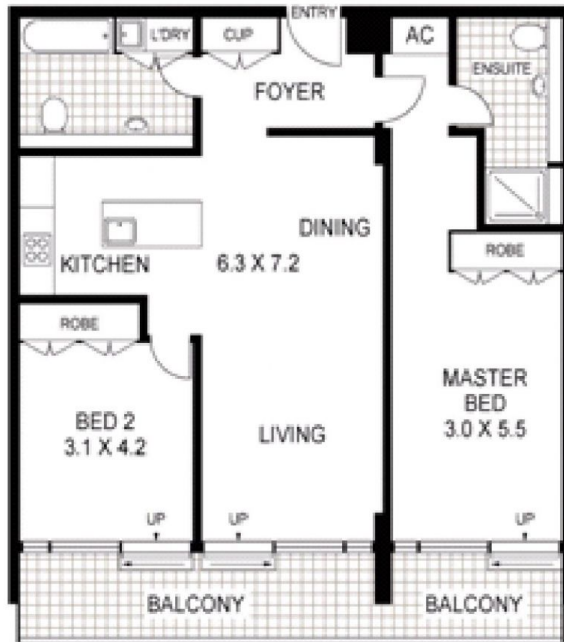
View

As advertised or by appointment

Agent

Morton RE

  rentals@morton.com.au



805/45 SHELLEY STREET

SYDNEY

Floor Plan Disclaimer: Mind the Gap (mtg) floor plans / site plans are intended as a guide only. No representations or warranties of any nature whatsoever are given or intended and any person using this information should always rely on their own enquiries. mtg property marketing services - 1300 133 143 - photography, floor plans, virtual tours, video tours, copywriting, project marketing - www.mindthegap.com.au

MORTON & MORTON