



morton.

Pyrmont Level 2/3 Darling Island Road



This is a unique rental opportunity to reside in a designer apartment on a waterfront peninsula. Tightly held and highly sought after this is one of only seven one bedroom residences in Darling Island's exclusive harbourfront enclave.

- Tranquil location with a short walk to Darling Harbour and city centre
- Open plan lounge/dining area, 2.7 metre ceilings
- Timber balcony with automatic sun shades
- Miele galley style kitchen with CeaserStone benches
- King size master with built-in wardrobes
- Ensuite with marble vanity, separate shower and bathtub
- Internal laundry with washer/dryer
- Dual zone ducted air-conditioning
- Concierge, secure parking and storage cage
- On site health club with pool, gym, spa, sauna

View

As advertised or by appointment

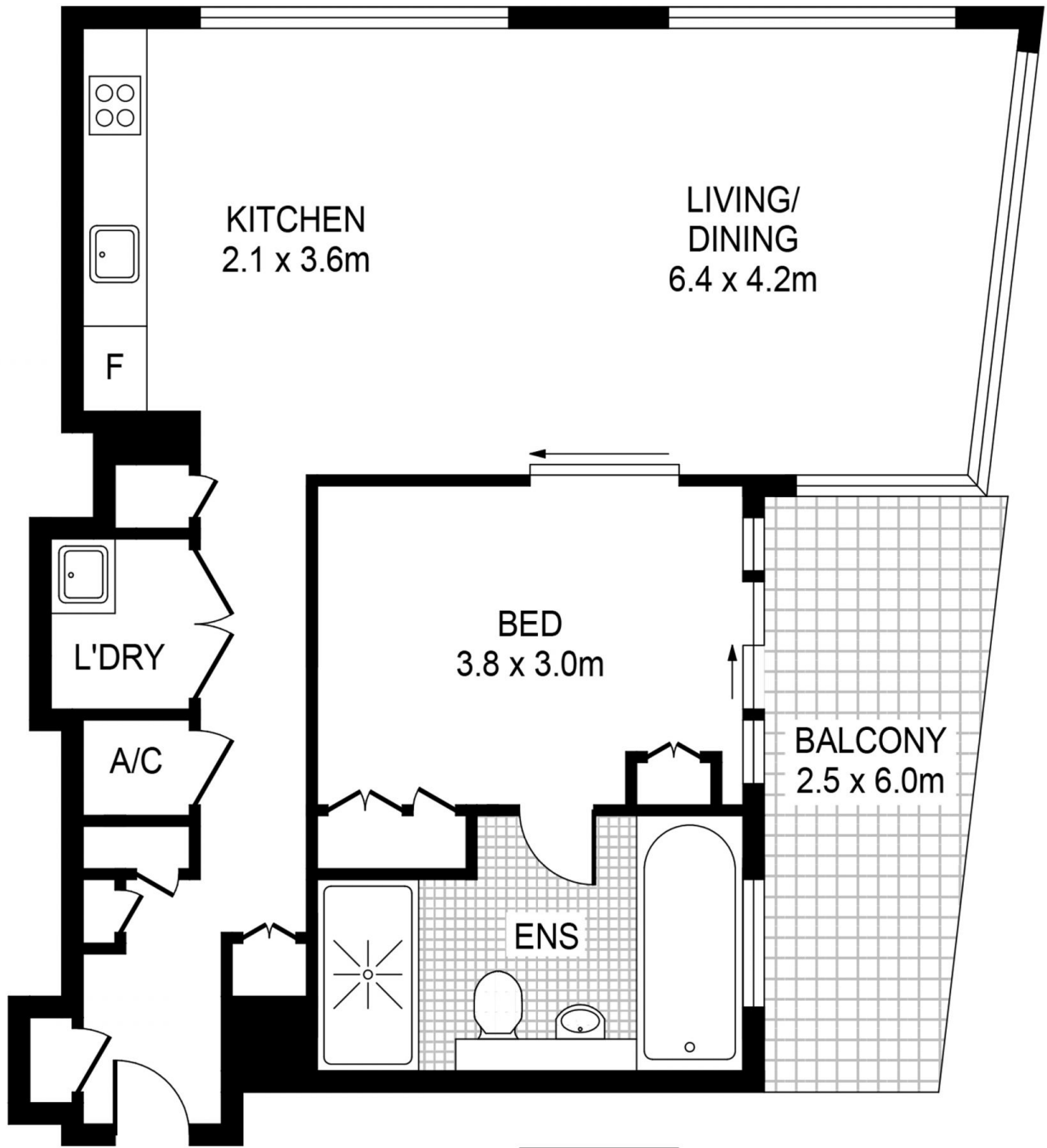
Agent

Nicole Beckett

📞 0409 896 152

✉️ nicole@morton.com.au

morton.com.au



ENTRY

