



**morton.**

**Kingswood** D602/48-56 Derby Street



With respect to the government's restrictions around open homes and to help stop the spread of COVID-19, our properties can be viewed by appointment only. Please submit an online enquiry or contact the listing agent for more information.

Conveniently located in the Omega Apartment development (entry via Foyer D), this unfurnished stylish and spacious near new one bedroom apartment has quality designer finishes and is ideal for the busy professional, close to all the amenities required, including being across the road from the upgraded Nepean Hospital and a 12 minute walk to Kingswood train station.

- Light-filled north-east facing position nestled on level 6 (sub-top floor) with balcony including gas and water tap outlet.
- Carpeted throughout with open living and dining, with designer drop-shadow cornices, reverse-cycle air conditioning, including additional storage cupboard, TV and gas outlet.
- Entertainer's eat-in gas kitchen with ample storage and

#### View

As advertised or by appointment

#### Agent

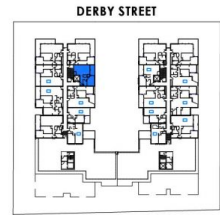
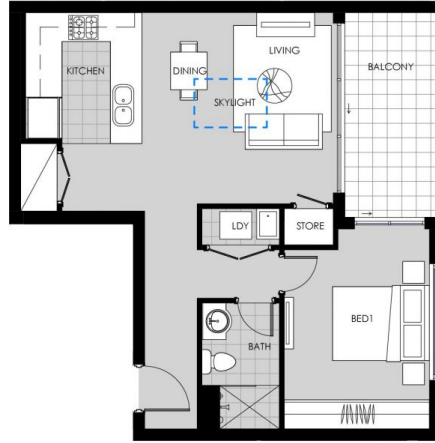
**Amy Torbarina**

📞 0438 977 172

✉️ amy@morton.com.au

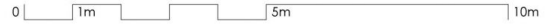
**morton.com.au**

# Unit D702

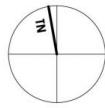


Internal = 52m<sup>2</sup>  
Balcony = 8m<sup>2</sup>  
Carspace = 1  
Storage  
-in Unit = 4m<sup>3</sup>  
-in Basement = 2m<sup>3</sup>

## Level 7- Unit D702



48-56 Derby Street  
KINGSWOOD



Skyton Developments do not guarantee, warrant or represent that the information contained in this advertising and marketing document is correct. Any interested parties should make their own enquires as to the accuracy of the information. We exclude all interest or implied terms, conditions and warranties arising from this document and any liability for loss or damage arising there from.

1:100 @ A4