



**morton.**

**St Peters** 2/44-56 May Street

 2  2  1

With respect to the government's restrictions around open homes and to help stop the spread of COVID-19, our properties can be viewed by appointment only. Please submit an online enquiry or contact the listing agent for more information.

This near new north-facing split level apartment is conveniently located only just a short stroll to shops and train station. With Camdensville Oval across the road and Sydney Park up the street, this property features:

- Spacious bedrooms with built-ins and en-suites
- Main bedroom with walk-in robe, en-suite and large private balcony
- Large living & dining flowing into sunny balcony capturing park views
- Modern kitchen with luxury inclusions, gas cooking, dishwasher, island bench, bar fridge and Miele appliances
- Two bathrooms plus 3rd toilet in laundry
- Two balconies with flyscreens installed

**morton.com.au**

**View**

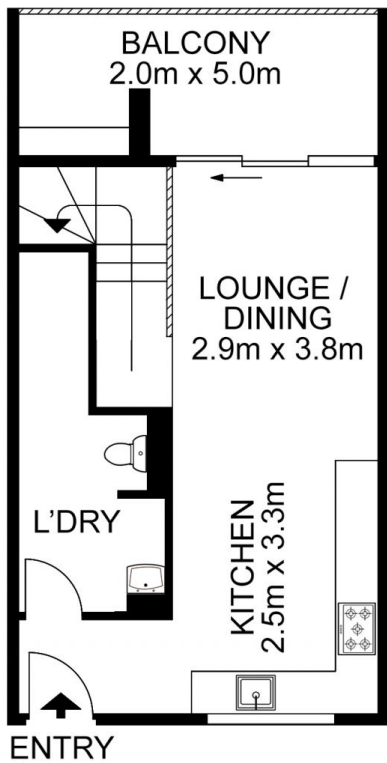
As advertised or by appointment

**Agent**

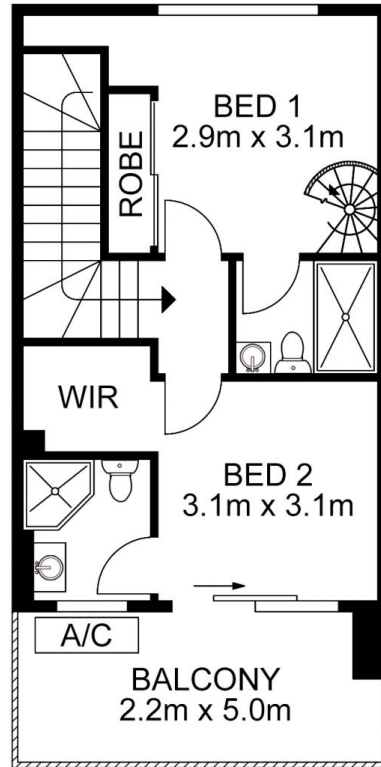
**Sarah Fowell**

 0437 492 129

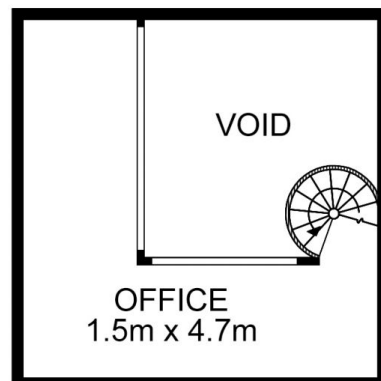
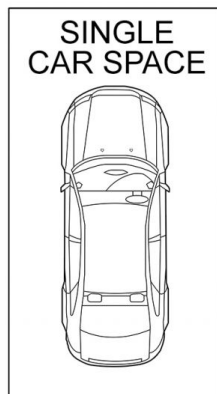
 sarah@morton.com.au



GROUND FLOOR



FIRST FLOOR



MEZZANINE

All information contained herein is gathered from all sources we believe to be reliable. However we cannot guarantee its accuracy and interested parties should rely on their own enquiries.

