



morton.

Penrith 319/1-39 Lord Sheffield Circuit

 2  2  1

With respect to the government's restrictions around open homes and to help stop the spread of COVID-19, our properties can be viewed by appointment only. Please submit an online enquiry or contact the listing agent for more information.

Located in the hub of North Penrith, Harts Landing apartments are stylish, unfurnished and offer contemporary urban living in a master planned vibrant community called Thornton Estate. Only metres from Penrith train station, Westfield shopping centre and local parks.

Features Include:

- Stylish kitchen, stone bench tops, soft close drawers
- Timber looking tiled open living and dining area
- Four burner stove top with stainless steel appliances
- Efficient LED throughout, large floor to ceiling windows
- Wool-blend carpeted bedroom mirrored built-in robes
- NBN ready, Data/TV/PayTV points in living & bedroom
- Block-out roller blinds throughout, reverse cycle A/C

morton.com.au

View

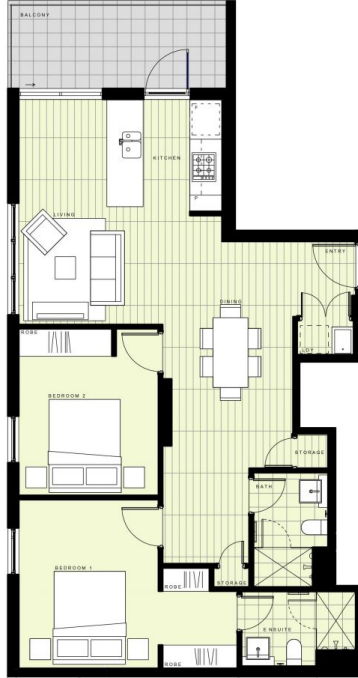
As advertised or by appointment

Agent

Amy Torbarina

 0438 977 172

 amy@morton.com.au



BUILDING B

LEVEL 3

APARTMENT B319 LOT 126

2 BEDROOM

INTERNAL AREA	74m ²
EXTERNAL AREA	8m ²
TOTAL	82m²



Disclaimer: This floor plan has been prepared for marketing purposes only. All descriptions, dimensions, depictions and other details in this floor plan may not be to scale and may vary from the property as built. Your attention is drawn to the special conditions of the contract for sale of land. No third party has any authority to make or give any representation or warranty in relation to the property unless the representation or warranty is confirmed by the vendor and included in the contract for sale of land. Revised floor plans - 14.08.18

CALL 1300 548 588
HARTSLANDING.COM.AU
 LORD SHEFFIELD CIRCUIT, PENRITH
LINK DISPLAY SUITE
 22 GADIGAL AVENUE, ZETLAND

PROUDLY DEVELOPED BY **PAYCE** SALES BY **LINK**