



**morton.**

**Wentworth Point** 112/6 Baywater Drive

 2  1  1

With respect to the government's restrictions around open homes and to help stop the spread of COVID-19, our properties can be viewed by appointment only. Please submit an online enquiry or contact the listing agent for more information.

Located in Corsica at The Waterfront, here is your opportunity to reside in this spacious low maintenance two bedroom apartment boasting a generous 40+ sqm. terrace with private gated direct-to-street entrance. Positioned in the centre of Wentworth Point you'll be footsteps from the waterside, local cafes and retailers, and local transport links including the complimentary Baylink shuttle. Just moments away from Marina Square and Pierside shopping precincts, Wentworth Point Public School, as well as having the parklands on your doorstep, this apartment is sure not to be missed.

- Combined open living and dining area flowing directly to alfresco entertainer's terrace balcony
- Timber flooring throughout

**View**

As advertised or by appointment

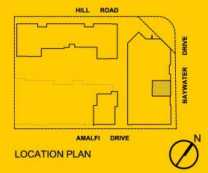
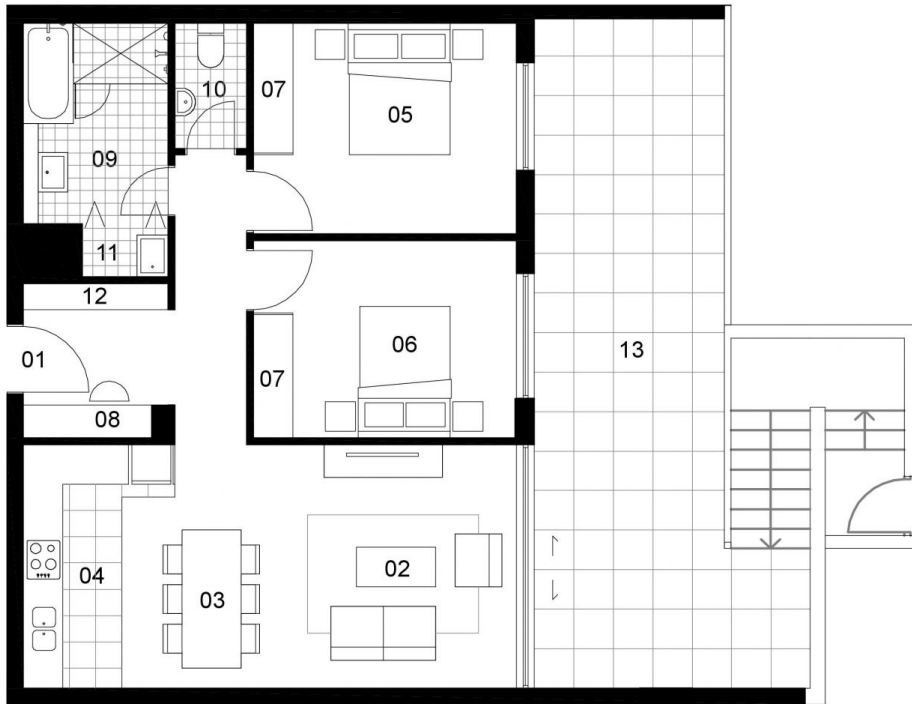
**Agent**

**Sarah Fowell**

 0437 492 129

 rentals@morton.com.au

**morton.com.au**



**UNIT 112**

2 BEDROOM

|               |           |
|---------------|-----------|
| INTERNAL AREA | : 75 sqm  |
| TERRACE AREA  | : 41 sqm  |
| TOTAL AREA    | : 116 sqm |

|                   |    |
|-------------------|----|
| ENTRY             | 01 |
| LIVING            | 02 |
| DINING            | 03 |
| KITCHEN           | 04 |
| BEDROOM1          | 05 |
| BEDROOM2          | 06 |
| WARDROBE          | 07 |
| STUDY             | 08 |
| BATHROOM          | 09 |
| WC                | 10 |
| LAUNDRY           | 11 |
| STORE             | 12 |
| BALCONY/COURTYARD | 13 |

Disclaimer: The particulars are set out as a general outline for the guidance of intending purchasers and do not constitute an offer or contract. All descriptions, dimensions, references to conditions and necessary permutations for use and other details are given in good faith and are believed to be correct, but any intending purchasers should not rely on them as statements or representations of fact, but must satisfy themselves by inspection or otherwise to the correctness of each item, and where necessary seek independent advice. No third party supplier or their agents has any authority to make or give any representations or warranty in relation to this property. \* External areas may be larger for courtyard apartments. Refer to the detailed area schedule.

**CORSICA**