



morton.

Penrith 607/91 Lord Sheffield Circuit

 2  2  1

A boutique residence presenting a new standard of contemporary living in Penrith. Situated within the Thornton precinct and designed with luxury in mind, it promotes the best of urban living, surrounded by the space and calm of Sydney's greater west. Your expectations have changed. There's a desire for modern comfort, convenience and time to relax and enjoy the beauty that surrounds you. The Henry provides all that makes this possible - including an easy commute to work, amenities at your doorstep and the Nepean River or Blue Mountains a short drive away.

Inspired by nature's warm tones and textures, flowing soft lines and contrasting exterior finishes provide a sense of elegance and classic style. There's everything you need, with the little extras you'll love - including communal gardens, BBQ facilities and secure covered parking.

- Fresh and airy open design with timber flooring
- Good sized double bedroom with built-ins
- Covered balcony that captures elevated views to Ron Mulock


morton.com.au

View

As advertised or by appointment

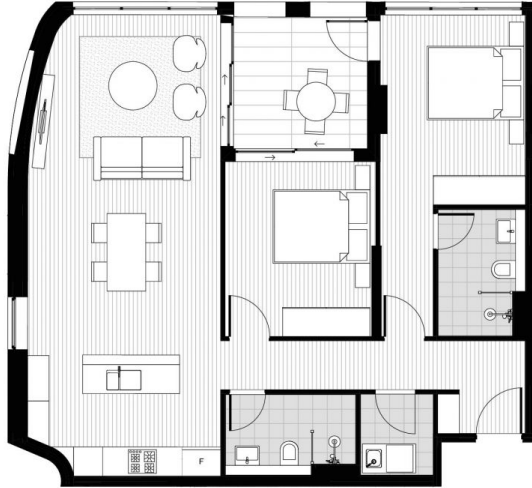
Agent

David Lipman

 0409 663 535

 david@morton.com.au

THE HENRY



APT 407
507.607
707.807

2 Bed | 2 Bath

Internal Area 84m²
External Area 8m²
Total Area 92m²



0m 1m 2m 3m

URBAN

Disclaimer: This floor plan has been prepared for marketing purposes only. All descriptions, dimensions, depictions and other details in this floor plan may not be to scale and may vary from the property as built. Your attention is drawn to the special conditions of the contract for sale of land. No third party has any authority to make or give any representations or warranties in relation to the property unless the representation or warranty is confirmed by the vendors and included in the contract for sale of land.

