



morton.

Wentworth Point J15079/17 Amalfi Drive

 2  2  1

With respect to the government's restrictions around open homes and to help stop the spread of COVID-19, our properties may be viewed by appointment only and only 1 person may inspect at a time. Please submit an online enquiry or contact the listing agent for more information.

Located in one of the finest and newest developments in Wentworth Point, One The Waterfront, this two bedroom, two bath plus study apartment offers a unique luxury lifestyle with high end facilities to entertain year round while maintaining the ambiance of that relaxed lifestyle you've always wanted. Within easy access to transport services to Rhodes, Parramatta and Circular Quay, you're also only a stone's throw away from local eateries, shops, and amenities with The Piazza, The Promenade, Marina Square and Pierside reached in just moments.

Property features include:

- Rare feature within this development, timber flooring in living spaces

morton.com.au

View

As advertised or by appointment

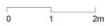
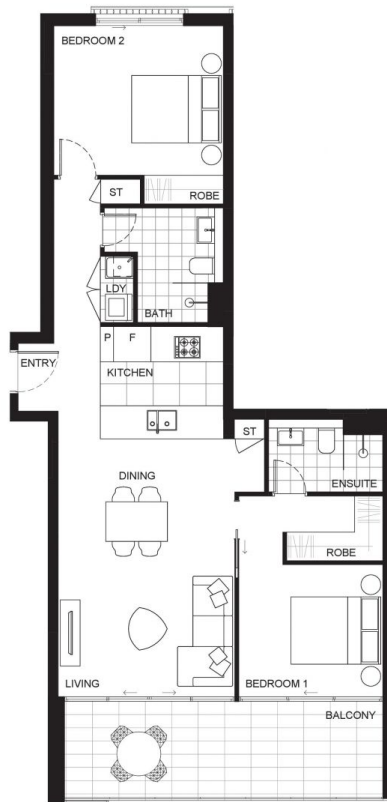
Agent

Nevena Petrovic

 0428 835 910

 nevena@morton.com.au

BUILDING
ONE J



Disclaimer: This floorplan, including treatment to balcony or courtyard, is indicative only and subject to change without notice. Any dimensions and areas shown may be varied subject to detailed design and authority requirements. Areas are measured from internal face of walls and from centreline of windows.

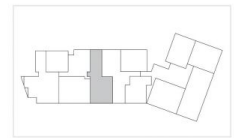
ONE

THE WATERFRONT

APARTMENT | LOT
15079 | **83**

2 Bed

INTERNAL 82m²
EXTERNAL 16m²
TOTAL 98m²



BUILDING ONE J LEVEL 15

1300 865 465

onethewaterfront.com.au

PIETYTHP