



morton.

Newtown 203/359 King Street

 1  1

This generous, modern apartment promises lifestyle and sophistication amid Newtown's vibrant atmosphere. The prime positioning of this property makes for an easy 150 metre walk to Newtown Station and footsteps from shops, dining options and entertainment.

- Private & tranquil rear setting with North-West aspect
- Large open plan layout with polished timber flooring throughout
- Modern CaesarStone kitchen with Smeg gas cooking, ample storage options
- Large bedroom with an oversized built-in robe and high ceilings
- Stunning ultra modern bathroom with floor-to-ceiling tiles
- Seamless flow to a generous entertainers balcony from the combined living and dining rooms
- Secure building with lift access and security intercom
- Centrally located- footsteps from cafes, restaurants & many transport options

View

As advertised or by appointment

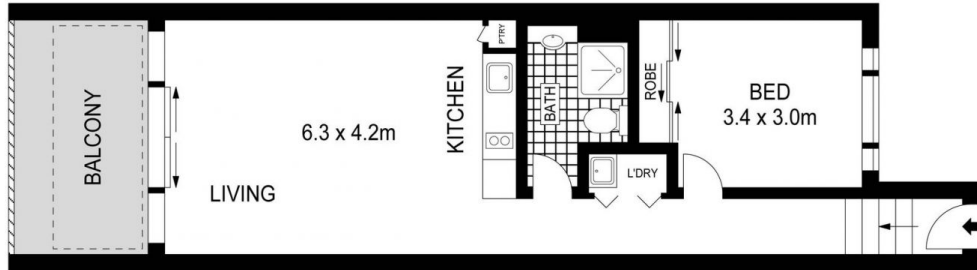
Agent

Morton RE



 rentals@morton.com.au

morton.com.au



SECOND FLOOR



APPROXIMATE AREAS	
Internal	54 sqm
Balcony	10 sqm

PLANS SHOWN ONLY INDICATIVE OF LAYOUT. DIMENSIONS ARE APPROXIMATE.
Ref. No: 52454

203/ 359 King Street, Newtown