



# morton.

Newington 20 Marathon Avenue

3 2 2

Providing the perfect balance of space, comfort and location, this bright and airy family home offers relaxed low maintenance living in a great part of Newington. Generous interiors combine with a private back alfresco patio to create an idyllic indoor/outdoor lifestyle with a focus on easycare living, and excellent convenience to all everyday necessities.

- Generous open plan design with easy to maintain polished flooring
- A user-friendly layout featuring separate living and family areas
- Private entertainment patio and low maintenance grassed garden
- Modern kitchen with good work space and quality gas cooktop
- Three upstairs bedrooms with built ins, the main has an ensuite
- Lock-up garage with storage space and internal access
- A full main bathroom plus downstairs WC and internal laundry

[morton.com.au](http://morton.com.au)

### View

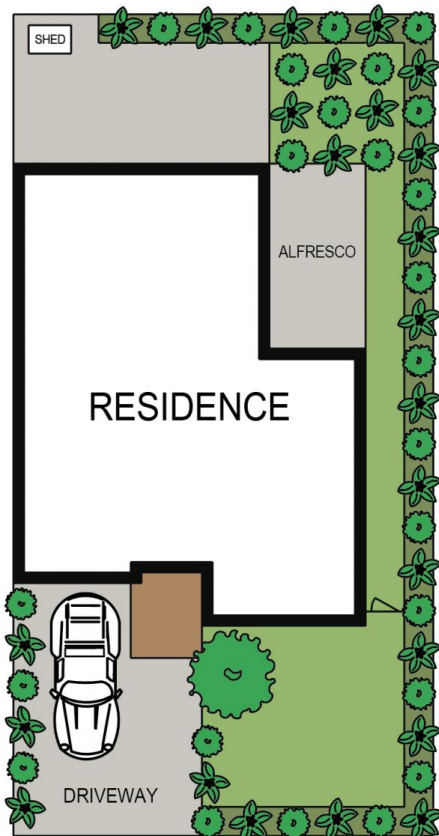
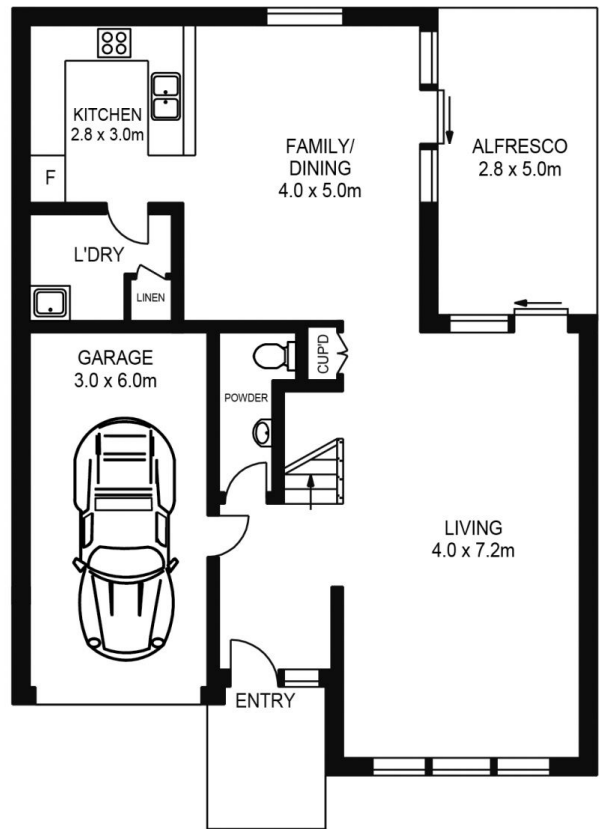
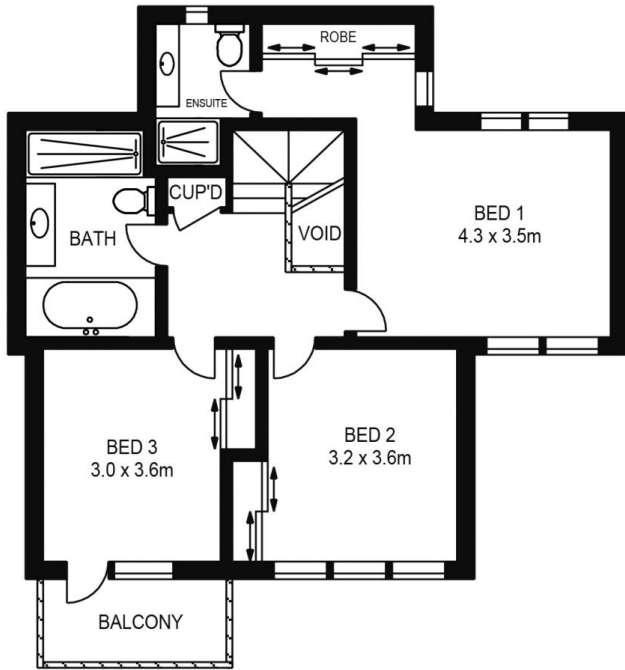
As advertised or by appointment

### Agent

**Dylan Choe**

0416 932 977

[dylanchoe@morton.com.au](mailto:dylanchoe@morton.com.au)



APPROX. INT. AREA : 163m<sup>2</sup>

APPROX. EXT AREA : 18m<sup>2</sup>

## 20 MARATHON AVENUE, NEWINGTON



www.assetphotographers.com.au

Please note these measurements are approximate only. The plans are intended as a rough guide for illustrative purposes. It is not warranted or guaranteed to be correct nor is it a part of the sale or rental contract.

