



**morton.**

**North Sydney** 902/245 Pacific Highway

 1  1  1

Showcasing all the essentials of the ultimate apartment lifestyle, this modern designer residence is set in the 'Montrose' complex and is immediately impressive. It combines light-filled interiors, sleek contemporary finishes.

- Fresh and bright interiors feature an open plan design
- Modern gas kitchen with stone benchtops and dishwasher
- Generous separate bedroom area with extensive built-in robes
- Seamless flow to covered balcony with district views
- Reverse cycle air conditioning, video intercom and lift access
- Secure car space and separate lock up storage cage
- Expansive rooftop with outdoor cinema and entertaining area
- Ideally located less than 4kms to Sydney's CBD

**View**

As advertised or by appointment

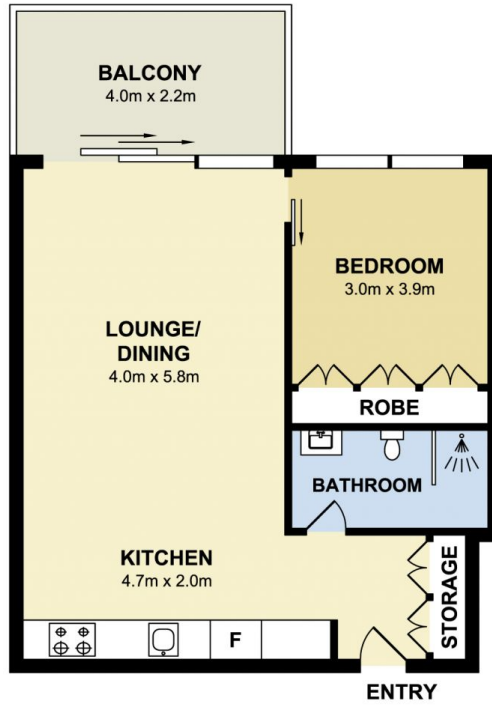
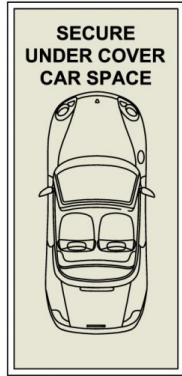
**Agent**

**Sarah Fowell**

 0437 492 129

 sarah@morton.com.au

**morton.com.au**



morton.

North Sydney 902/245 Pacific Highway