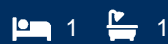


morton.

Sydney Level 4/157 Liverpool Street



This generous one bedroom + study is positioned on Level 4 of The Hyde and features north facing Hyde Park views.

- Generous floorplan with high ceilings
- Separate study area, reverse cycle air conditioning
- Luxurious bathroom, internal laundry,
- Modern kitchen with stainless steel appliances and Caesarstone bench tops.
- Good sized bedroom with built-in robes
- Pets not permitted

Residents enjoy access to stunning 25m indoor pool, outdoor sun deck, bbq facilities, library, sauna, gymnasium and 24hr concierge.

Available: 29th June, 2021

View

As advertised or by appointment

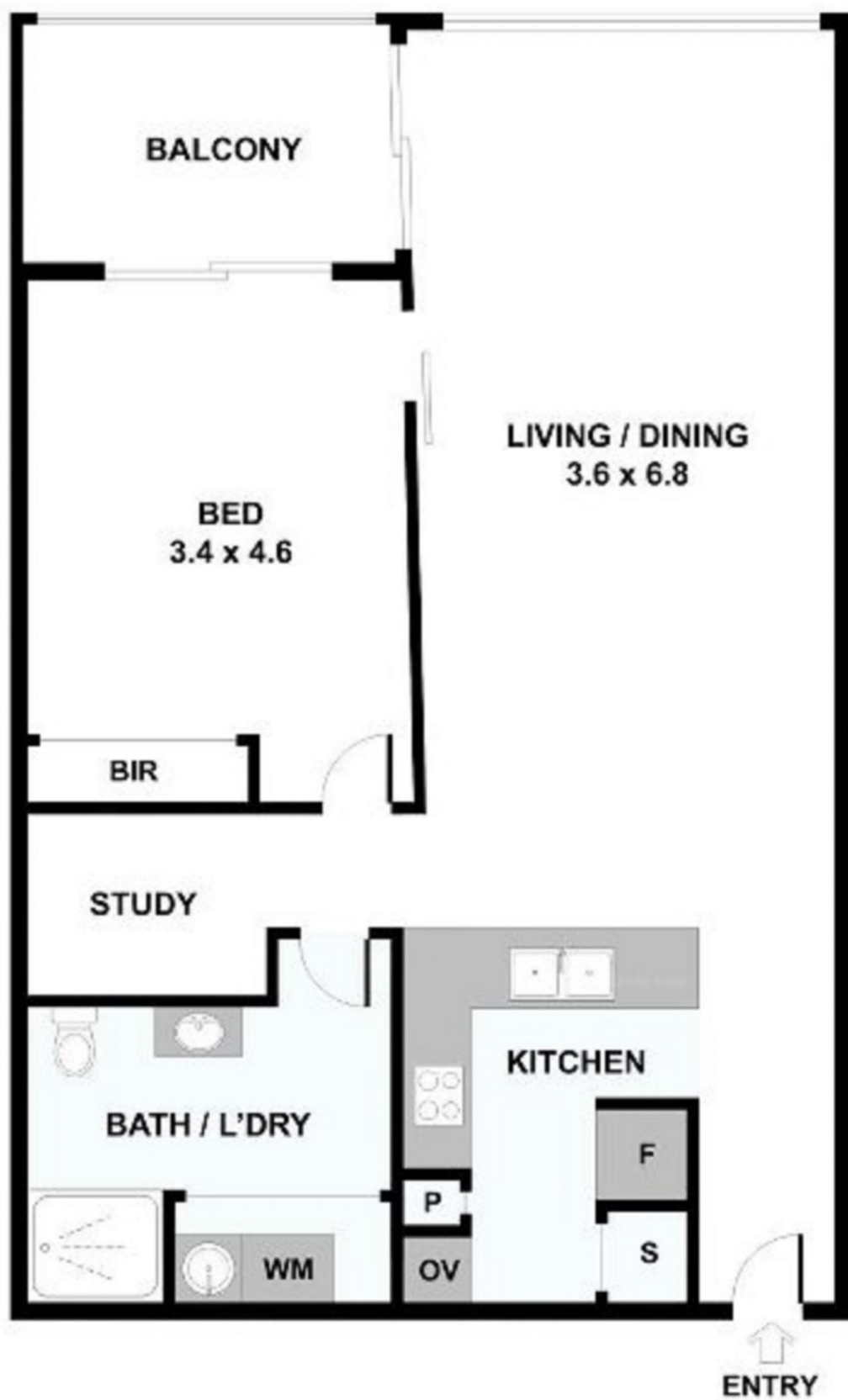
Agent

Morton RE



rentals@morton.com.au

morton.com.au



Please note: All stated dimensions are approximate only. Particulars given are for general information only and do not constitute any representation on the part of the vendor or agent.