



morton.

Chippendale 1401/8 Park Lane



This luxury apartment exudes a perfect balance of aesthetics, practicality, warmth and clean minimalism. Featuring fresh modern interiors and a superb position, this Central Park apartment holds enormous appeal for both buyers and investors. Move straight in and enjoy a lifestyle of supreme convenience within footsteps to a variety of excellent eateries, transport and amenities.

- Currently tenanted for \$735.00 per week
- Living and dining flows easily to a large enclosed balcony
- Stylish contemporary kitchen with quality appliances
- Large bedroom, custom built-in wardrobe, ducted air conditioning
- Ultra modern bathroom with internal laundry facilities
- 3sqm lock up storage cage
- Building facilities include gym and pool
- Exceptional investment property in a sought-after setting
- Skyline views of Iconic heritage buildings
- Stroll to Sydney Uni, UTS, buses/trains, cafes, restaurants and CBD

View

As advertised or by appointment

Agents

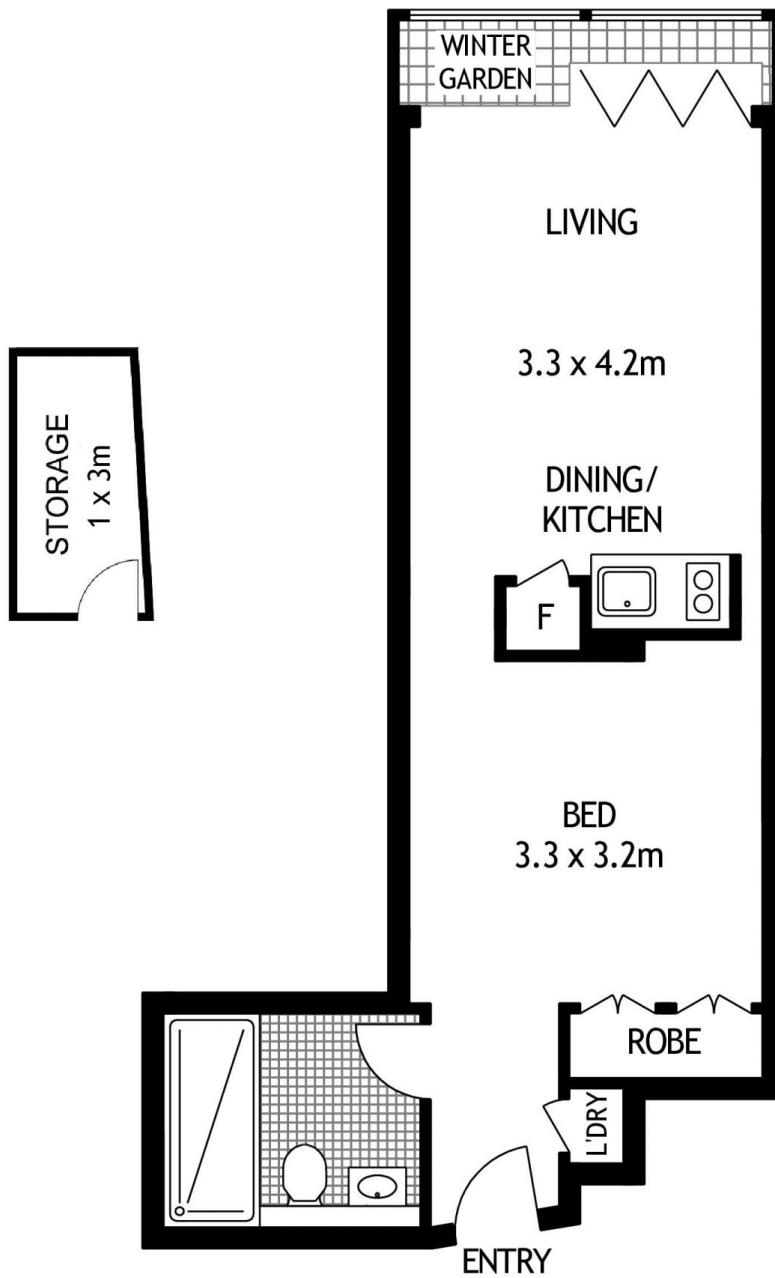
Ian Qiu

- 📞 0447 696 425
- ✉️ ian@morton.com.au

Naomie Texier

- 📞 0439 247 710
- ✉️ naomie@morton.com.au

morton.com.au



LEVEL FOURTEEN



1401/8 PARK LANE

CHIPPENDALE

SCAPE Floor Planing Disclaimer: This floor plan is conceptual only. it is provided for illustrative purposes only and should not be relied upon. We make no guarantees to the correctness of this plan. All interested parties should make and rely on their own enquiries in determining the accuracy of the information contained in this floor plan.