



morton.

Wentworth Point 316/4 Baywater Drive

🛏 1 🚗 1 🚗 1

Located in Corsica at The Waterfront, here is your opportunity to move into this sunny one bedroom apartment. A short stroll to The Piazza, local restaurants, convenience store, pharmacy, public transport off Hill Road and ferry service to Parramatta and City CBD. The Waterfront is located moments to Sydney Olympic Park main venues and train station, Bicentennial Park and Millennium Parklands.

View

As advertised or by appointment

Agent

Nevena Petrovic

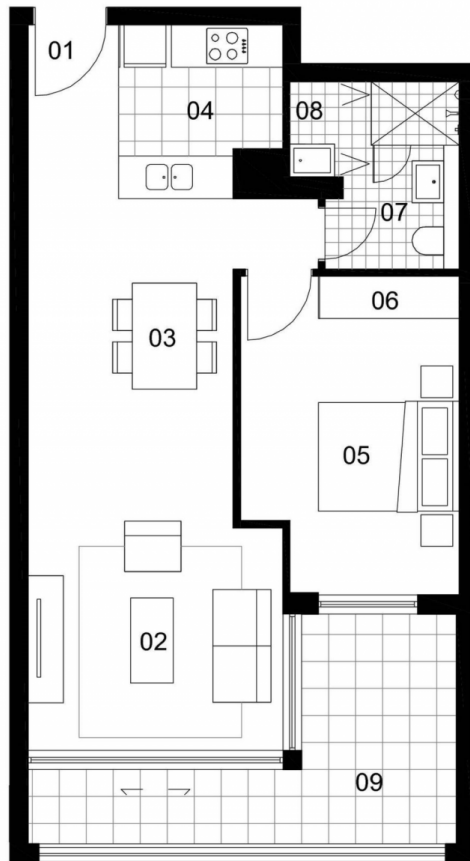
📞 0428 835 910

✉ nevena@morton.com.au

Property features include:

- Excellent natural light and air flow
- Split system air conditioning
- Generous size lounge room flowing onto balcony
- Good size bedroom with built-in wardrobe
- Laundry room and clothes dryer
- Modern contemporary finishes
- Stone bench tops and stainless steel appliances
- Large bathroom with bathtub & separate shower
- Secure basement car space and storage cage

morton.com.au



1 BEDROOM

INTERNAL AREA	: 55 sqm
TERRACE AREA	: 10 sqm
TOTAL AREA	: 65 sqm

ENTRY	01
LIVING	02
DINING	03
KITCHEN	04
BEDROOM	05
WARDROBE	06
BATHROOM	07
LAUNDRY	08
BALCONY/COURTYARD	09

Disclaimer: The particulars are set out as a general outline for the guidance of intending purchasers and do not constitute an offer or contract. All descriptions, dimensions, references to conditions and necessary permutations for use and other details are given in good faith and are believed to be correct, but any intending purchasers should not rely on them as statements or representations of fact, but must satisfy themselves by inspection or otherwise to the correctness of each item, and where necessary seek independent advice. No third party supplier or their agents has any authority to make or give any representations or warranty in relation to this property. * External areas may be larger for courtyard apartments. Refer to the detailed area schedule.

CORSICA