



**morton.**

**Kirrawee** 203/9 Village Place

 2  2  1

With respect to the government's restrictions around open homes and to help stop the spread of COVID-19, our properties can be viewed by appointment only. Please submit an online enquiry or contact the listing agent for more information.

Great opportunity to lease one of Kirrawee's finest and newest apartments in South Village, an iconic development in Sutherland Shire. Conveniently situated only a 180m walk to Kirrawee station, shopping village right at your doorstep with Coles and Aldi supermarkets, eateries & cafes and childcare center. With easy access to the CBD, national parks and Cronulla Beach, South Village offers a unique luxury lifestyle.

- This unit features northern city views and fulfilled with sunlight
- Large island bench modern styled kitchen
- Generous open plan design, separate dining area
- Bathroom/ensuite has floor to ceiling tiles, mirrored vanity cabinet

**morton.com.au**

**View**

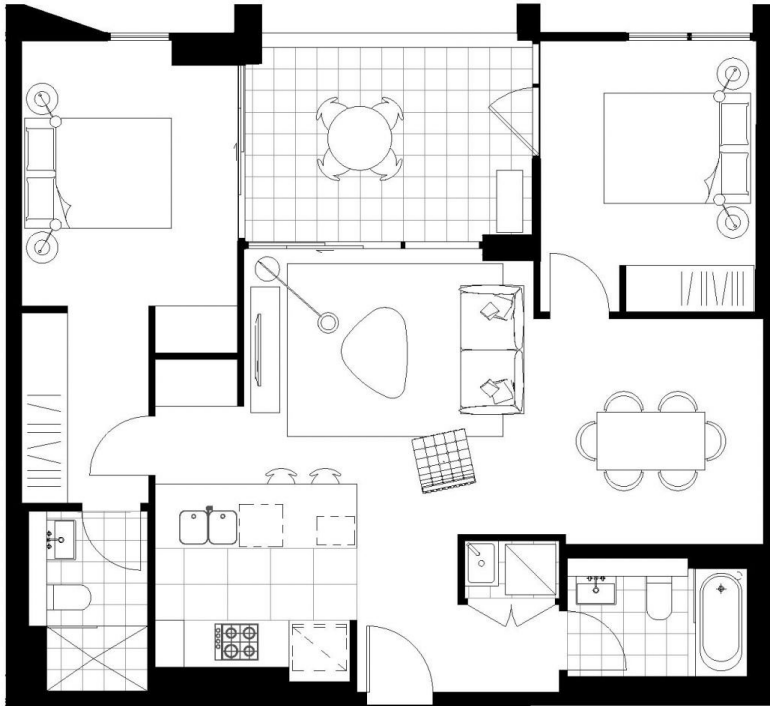
As advertised or by appointment

**Agent**

**Lisa Xi**

 0401 311 667

 [lisa@morton.com.au](mailto:lisa@morton.com.au)



# VIVID

## LEVEL 3

C3.03 LOT 209

2 BED 2 BATH

INTERNAL 78 Sqm

BALCONY 10 Sqm

**TOTAL 88 Sqm**



**Disclaimer:** This floor plan has been prepared for marketing purposes only. All dimensions, orientations, locations and other details in this floor plan are not to scale and may vary from the property as built. Your attention is drawn to the special conditions of the contract for sale of land. No third party has any authority to make or give any representation or warranty in relation to the property unless the representation or warranty is contained in South Village Pty Ltd ACH 864 771724 and included in the contract for sale of land. Furniture shown is not included. 9/12/2021

[vidsouthvillage.com.au](http://vidsouthvillage.com.au)

South Village brought to you by

**PAYCE**



Marketed by

**BOSTON**  
MARKETING