



# morton.

**Waterloo** 5.05/830 Elizabeth Street

 2  2  1

With respect to the government's restrictions around open homes and to help stop the spread of COVID-19, our properties can be viewed by appointment only. Please submit an online enquiry or contact the listing agent for more information.

With respect to the government's restrictions around open homes and to help stop the spread of COVID-19, all open inspections and private appointments have been cancelled until further notice. Please contact the listing agent for more information.

Two-storey penthouse apartment with private rooftop terrace and pool  
Offering the perfect balance of a timeless heritage building, industrially inspired designs, and bespoke apartments.

- Contemporary modular designs, combining the best in raw solid materials and a modernised, fresh look
- Huge private roof top terrace with Pergola and oversized

[morton.com.au](http://morton.com.au)

### View

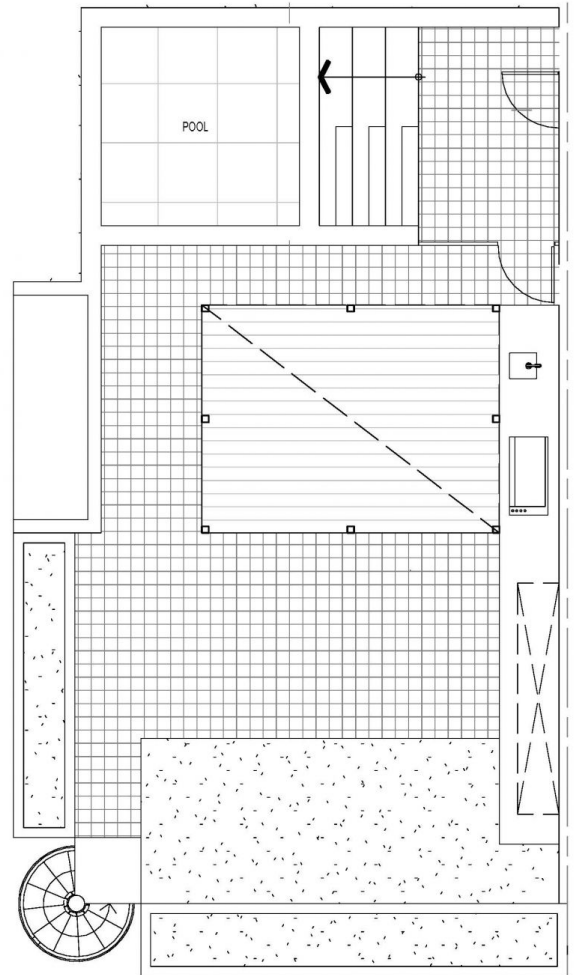
As advertised or by appointment

### Agent

**Sarah Fowell**

 0437 492 129

 [sarah@morton.com.au](mailto:sarah@morton.com.au)



Terrace (not to scale)

**APARTMENT**

5.05



level 5

ELIZABETH STREET

Bedrooms:	2
Bathrooms:	2
Carspace:	1
Internal area:	110 sqm
External area:	132 sqm
Total area:	242 sqm

**Disclaimer:** Floor Plan measurements are approximate and are for illustrative purposes only. While we do not doubt the floor plans accuracy, we make no guarantee, warranty or representation as to the accuracy and completeness of the floor plan. Please refer to the 'draft strata plan' for precise measurements of each floor plan within the ICONIC Development.