



morton.

Wentworth Point 205/1 The Piazza

🛏 1 🚿 1 🚗 1

This spacious and secure apartment enjoys a great setting in the award-winning The Waterfront community, conveniently located within a strolling distance to local amenities including the Pulse Fitness centre. A premium waterside location within footsteps to parklands and The Piazza's café and dining gives this modern low maintenance apartment excellent lifestyle appeal. Featuring a flowing layout and a spacious balcony facing treelined views ideal for entertaining, it captures the essence of easy living with generous proportions, quality appointments and a great sense of privacy.

Features:

- Newly installed plush pile carpet throughout
- Bright and airy open design with lounge and dining space
- Spacious balcony flowing off living area
- Double-sized bedroom with built-in wardrobe and direct balcony access
- Quality kitchen fitted with a stainless steel gas cooktop
- Secure car space for one

View

As advertised or by appointment

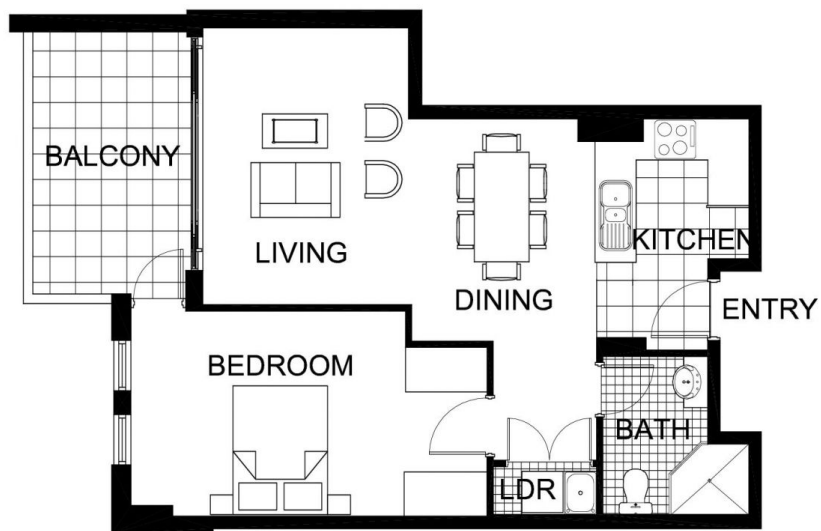
Agent

Sarah Fowell

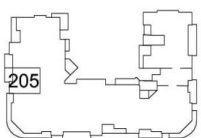
📞 0437 492 129

✉ rentals@morton.com.au

morton.com.au



"The information contained herein is intended as an introduction to the general content of the project and is subject to variation. Interested parties should rely on their own enquiries and the contract for sale. The developer reserves the right to vary from these descriptions as it deems necessary or as any relevant authority may require."



1 BEDROOM **APARTMENT 205** **TYPE 1A/1**

INTERNAL AREA 51sqm OUTDOOR AREA 9sqm TOTAL AREA 60sqm



LEVEL 2

CAPRI