



morton.

Wentworth Point H11122/19 Amalfi Drive

 2  2  1

Here is your opportunity to reside in Wentworth Point's finest and latest, One The Waterfront.

One the Waterfront offers a unique luxury lifestyle with high end indoor and outdoor facilities to entertain you all year round. Located at the foot of Wentworth Point, One the Waterfront is in easy access to transport services to Rhodes, Parramatta and Circular Quay.

Property features include:


- Generous open plan design with latest in décor finishes
- Quality designer kitchen with Bosch built-in appliances
- Air-conditioning, video intercom entry and lift access
- Beautiful communal gardens with landscaped surrounds
- Walk to restaurants, Olympic Park, Ferry Wharf and specialty stores
- Security parking space with storage cage

View

As advertised or by appointment

Agent

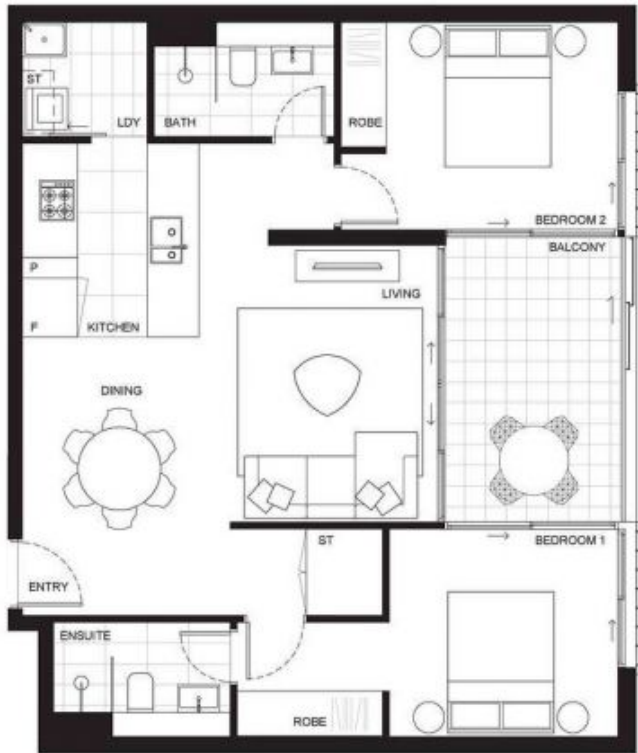
Nevena Petrovic

 0428 835 910

 nevena@morton.com.au

morton.com.au

**BUILDING
ONE H**



Disclaimer: This plan is a guide only and does not constitute an offer or contract. Please note changes may be made during the development and construction. Fittings, fixtures and specifications are subject to change without notice in accordance with the terms of the contract of sale. All parties must rely on their own investigation to validate this information as it is not guaranteed. No liability will be accepted for any inaccuracy or misstatement. (Date issued 01/04/18 C)

ONE

THE WATERFRONT

APARTMENT
11122

LOT
59

2 Bed + 2 Bath

INTERNAL	76m ²
EXTERNAL	10m ²
TOTAL	86m²

BUILDING ONE H LEVEL 11

1300 865 465 onethewaterfront.com.au

DEVELOPED BY
PIETYTHP

SALES BY
LINK