



morton.

Sydney 1106/23 Shelley Street

🛏 2 🚿 2 🚗 2

Located in the heart of King Street Wharf, this spacious apartment boasts sophistication and customisation. Supremely stylish and showcasing a striking modern design, it provides a superb living environment and makes a stunning home for the entertainer with a focus on effortless in/outdoor dining with harbour water views.

- Impressively well proportioned open plan lounge/dining
- Bedrooms and living area all occupy a North facing outlook
- Option for extra 3rd bedroom
- Generous entertainers balcony, private and peaceful
- Deluxe bathrooms and bespoke cabinetry
- New carpets installed throughout
- Just a walk to Wynyard, ferries, theatres and parklands
- Ducted air-con, two security car spaces
- Concierge 24/7, gym, pool, sauna

View

As advertised or by appointment

Agents

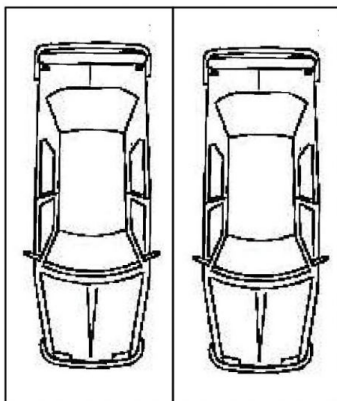
Ettiene West

📞 0410 593 749
✉ ettiene@morton.com.au

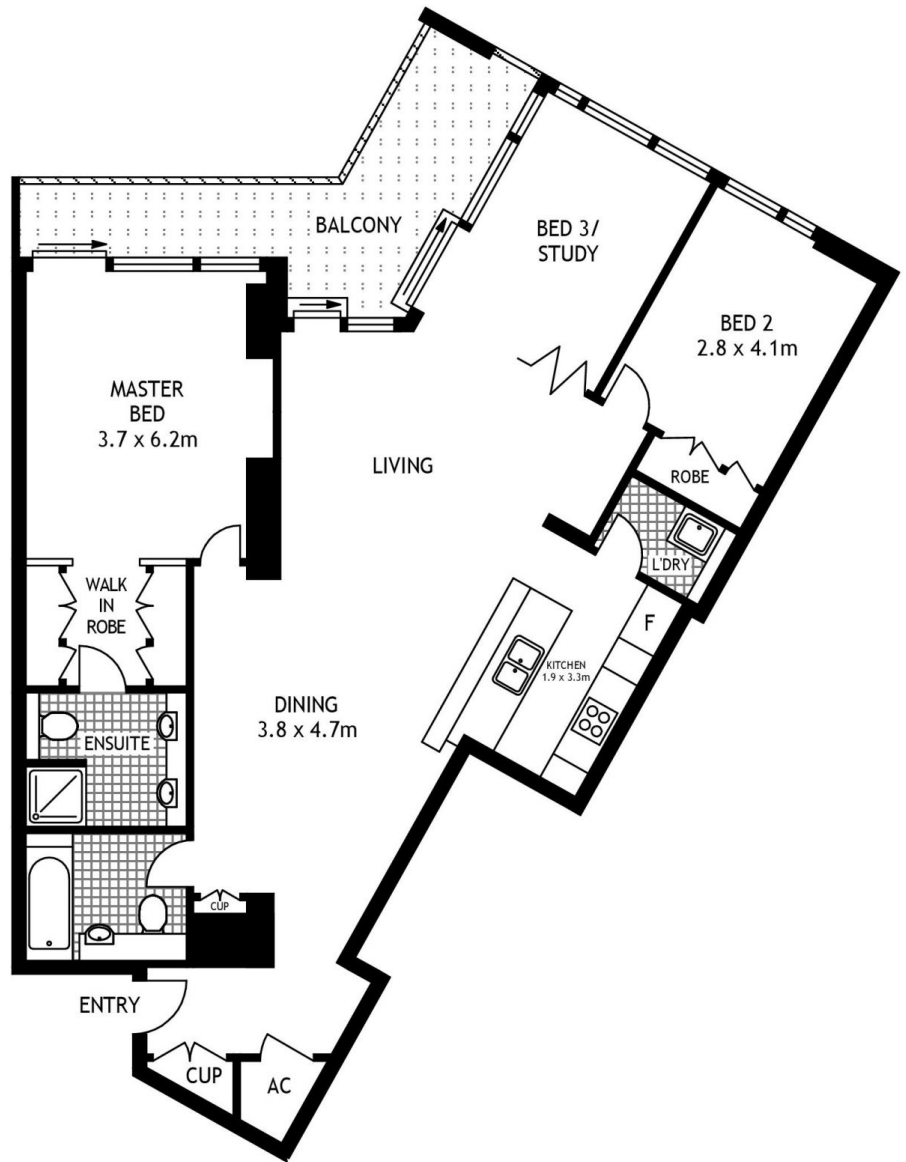
Emma Ryan

📞 0409 325 440
✉ emmar@morton.com.au

morton.com.au



DOUBLE
SECURITY
PARKING



LEVEL ELEVEN



1106/23 SHELLEY STREET

SYDNEY

SCAPE Floor Planing Disclaimer: This floor plan is conceptual only. It is provided for illustrative purposes only and should not be relied upon. We make no guarantee as to the correctness of this plan. All interested parties should make and rely on their own enquiries in determining the accuracy of the information contained in this floor plan.