



# morton.

Wentworth Point 508/19 Hill Road

2 2 1

Privately positioned high in the exclusive 'Sorrento' building and dominated by breath-taking parkland views across to Woo La Ra Reserve, this superb residence is filled with natural light. Flowing over two welcoming levels, this impressive home embodies quality living without compromise.

- Well appointed with stylishly low maintenance finishes
- Freshly painted throughout
- Oversized master retreat with ensuite, balcony, built-ins
- Open plan lounge and dining areas, three balconies
- Sleek gourmet kitchen, stone benches, gas appliances
- Split system air conditioning, & storage cage
- Resort facilities include pool, gym, library and tennis courts
- Just metres to cafes, shops and a bustling village lifestyle

### View

As advertised or by appointment

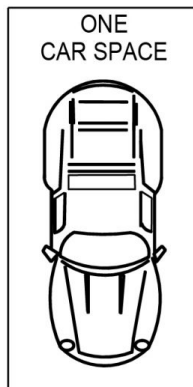
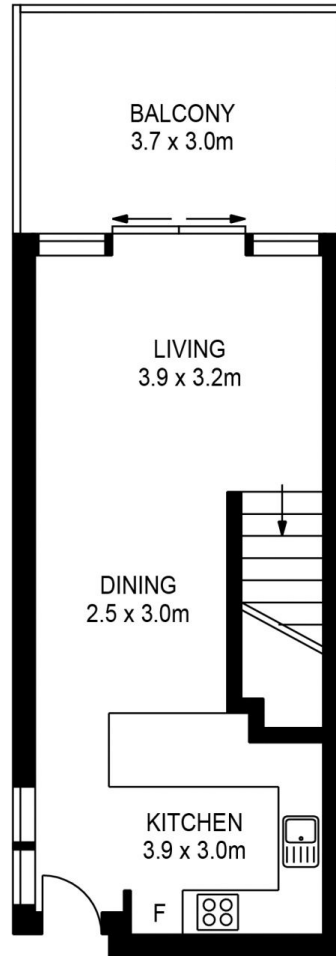
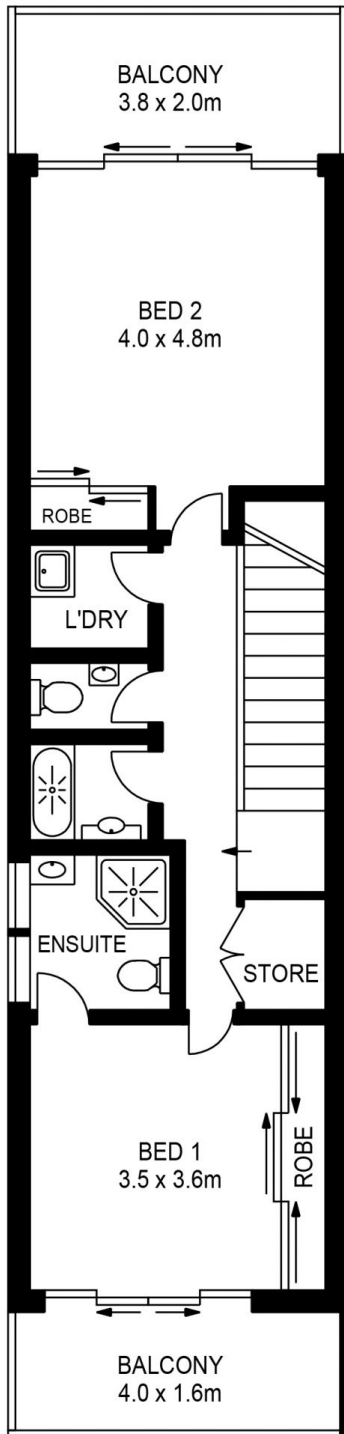
### Agent

**Dylan Choe**

0416 932 977

dylanchoe@morton.com.au

[morton.com.au](http://morton.com.au)



APPROX. INT. AREA : 95m<sup>2</sup>

APPROX. EXT AREA : 41m<sup>2</sup>

508/19 HILL ROAD, WENTWORTH POINT



www.assetphotographers.com.au

Please note these measurements are approximate only. The plans are intended as a rough guide for illustrative purposes. It is not warranted or guaranteed to be correct nor is it a part of the sale or rental contract.

