



morton.

WOOLLOOMOOLOO 530/6 Cowper Wharf Road

1 1 1

A very spacious 94sqm one bedroom loft apartment overlooking the bay towards Garden Island, and situated in the prestigious Finger Wharf Apartments.

- Large living area complimented by high ceilings
- Loads of light and an enclosed balcony
- State of the art blinds to enable complete protection and privacy
- Ensuite & walk in robe off the lofted bedroom
- Ceiling skylights allowing light to penetrate the apartment
- Reverse cycle air conditioning
- Secure car space in Lincoln Crescent
- 24 hour on-site security

View

As advertised or by appointment

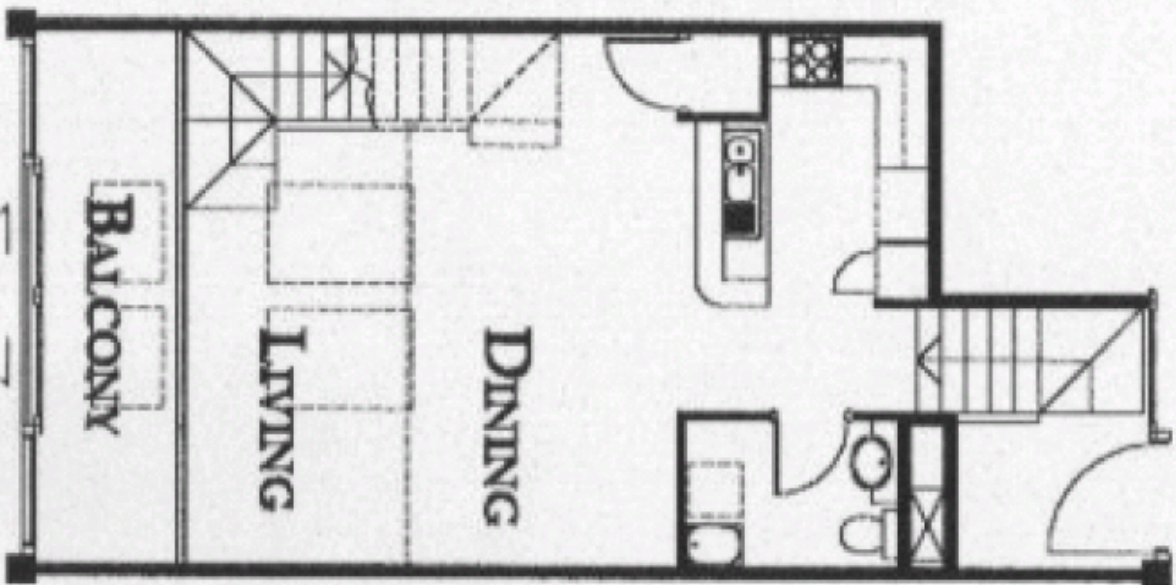
Agent

Morton

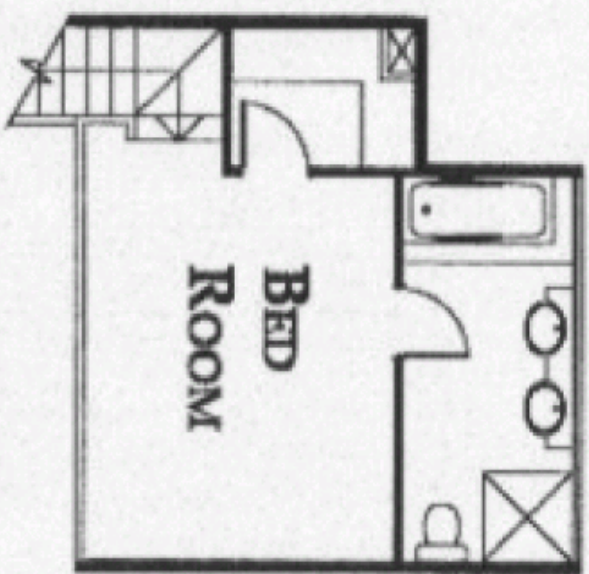


info@morton.com.au

morton.com.au



LEVEL 5



LOFT