



# morton.

**Pyrmont** 341/3 Darling Island Road

 3  3  2

Located on the northern tip of Darling Island's exclusive harbourside peninsula this enormous apartment occupying the entire northern level enjoys expansive uninterrupted harbour, city and bridge views from all living spaces. This unique residence sets the bench mark for space, light and the highest standard of design and finishes.

- Grand 90 sqm living w/ floor to ceiling glass w/ harbour backdrop
- Entertainers o/door terraces are accessed around the entire apartment
- 3 double bedrooms all with views, built-ins and marble en suites
- Designer kitchen inc Euro appliances, wine storage and coffee machine
- Central touch screen lighting, air con, floor heating & exterior screens
- Excellent security systems
- Secure under ground parking for 2 cars
- Resort style facilities inc pool, gym, spa and sauna

[morton.com.au](http://morton.com.au)

### View

As advertised or by appointment

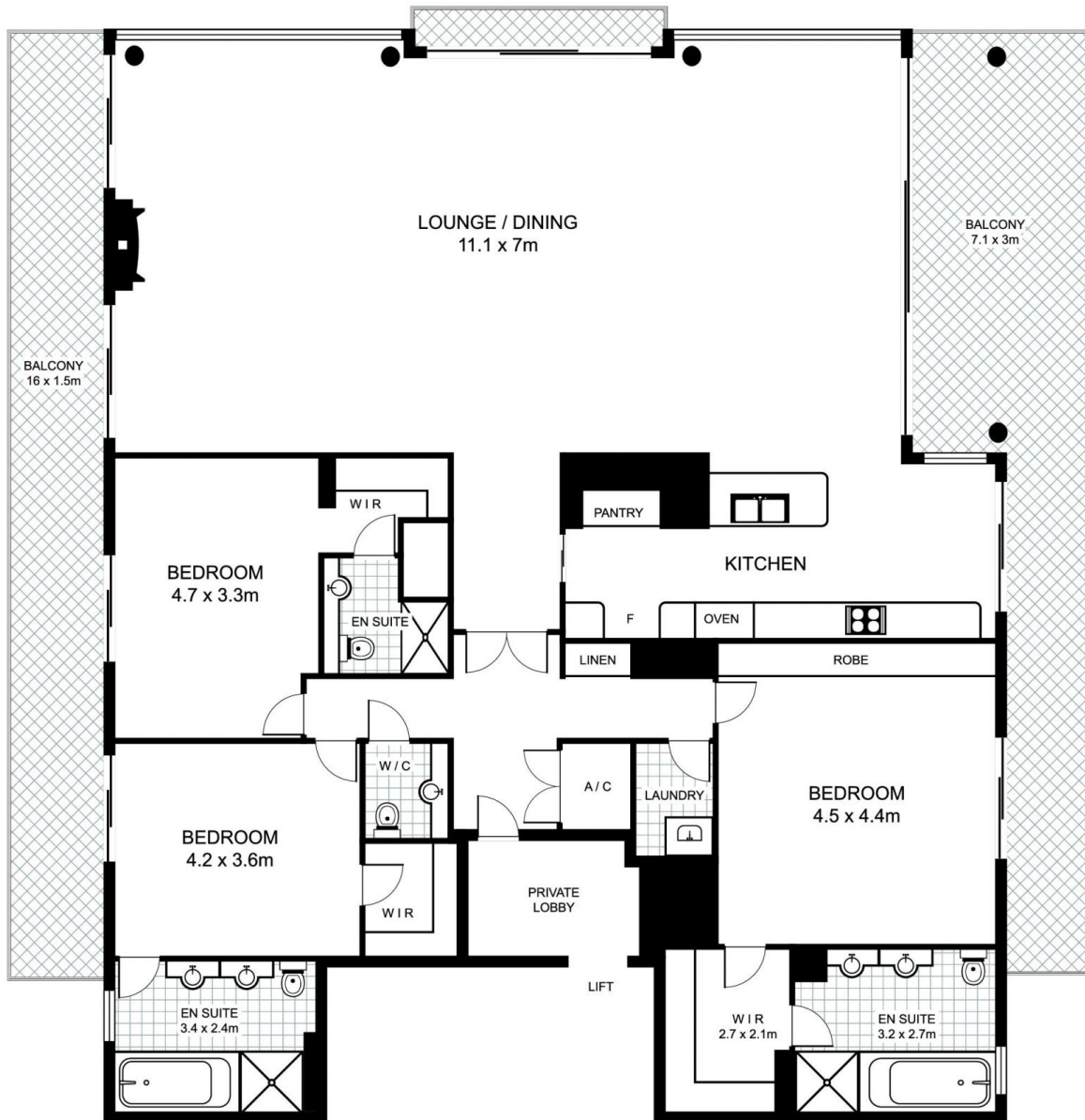
### Agent

**Sarah Fowell**

 0437 492 129

 [sarah@morton.com.au](mailto:sarah@morton.com.au)

# 3 Darling Island Road, PYRMONT



This floor plan is intended as a guide only. Layout dimensions are approximate only. No representations or warranties of any nature whatsoever are given or intended. Any person using this information should rely on their own enquiries



Plans by  
**surrundpix**  
com.au  
1300 30 32 40