



morton.

Wentworth Point 604/37 Amalfi Drive

 1  1  1

Located in Sorrento in The Waterfront, this is your opportunity to move into this North-facing one bedroom apartment only a short stroll from The Promenade and The Piazza. The Waterfront is located moments to Sydney Olympic Park main venues, train station, Bicentennial Park and Millennium Parklands. while Wentworth Point's exclusive Pulse Club is at your doorstep. A stone's throw away to Marina Square shopping centre, Wentworth Point Public School, and ferry and bus links means all your lifestyle needs are at your fingertips.

Features features include:

- Combined open plan living and dining leading to North-East facing balcony
- Fully equipped kitchen with gas cooking, dishwasher and microwave
- Spacious bedroom with built-in wardrobes and private balcony
- Internal laundry with clothes dryer
- Air conditioning

morton.com.au

View

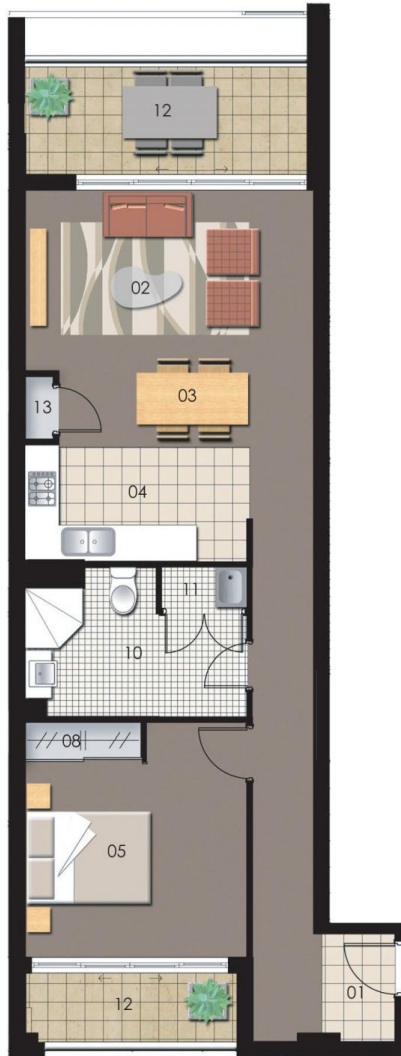
As advertised or by appointment

Agent

Nevena Petrovic

 0428 835 910

 nevena@morton.com.au



- ENTRY 01
- LIVING 02
- DINING 03
- KITCHEN 04
- BEDROOM 1 05
- BEDROOM 2 06
- BEDROOM 3 07

- WARDROBE 08
- ENSUITE 09
- BATHROOM 10
- LAUNDRY 11
- BALCONY 12
- STORAGE 13



Unit 604

Lot Number	11
Type	1 Bedroom
Unit Area	62 sqm
Balcony	8 sqm
Total	70 sqm

Disclaimer: All layouts are indicative only, and subject to change.

05.05.06 : Revision D