



# morton.

**Greenwich** 25/205 Greenwich Road

 2  1  1

A sleek renovation has given this generous two-bedroom apartment a stunning new look and feel and created a stylish home with mesmerising water views. Set against a beautiful backdrop of the Lane Cove River's boating playground, it offers a well-proportioned and light filled home with a large single level layout, many designer finishes and a peaceful position within the sought-after 'Greenwich Point Marina' building.

- Beautiful sunset vistas across the water to Woodford Bay
- Bright, airy and open with crisp décor and air conditioning
- Large floor-to-ceiling windows that maximise light and views
- Contemporary kitchen with gas fittings and breakfast bar
- A sunlit balcony plus an undercover car space and storage cage on title
- Both bedrooms with built ins, designer bathroom and laundry

### View



As advertised or by appointment

### Agents

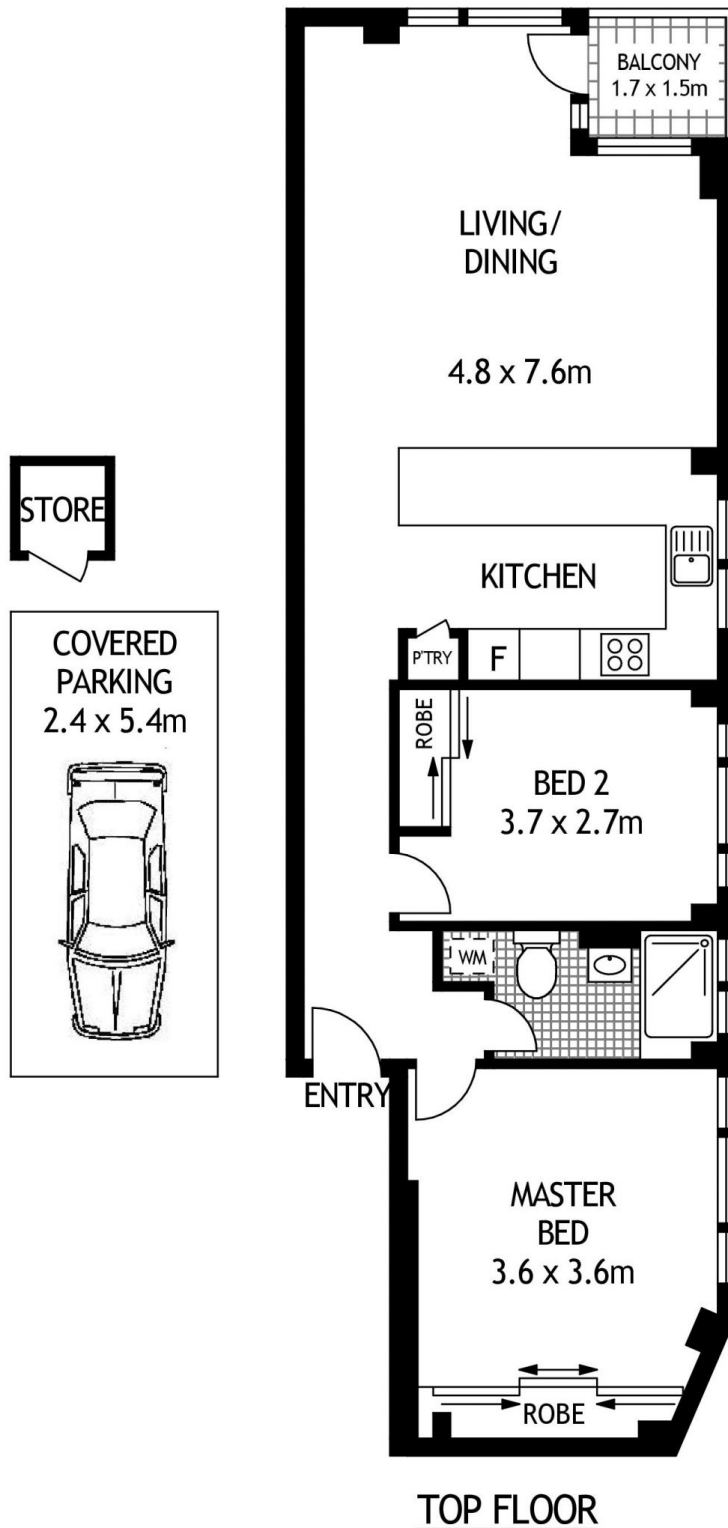
#### Lucy White

 0413 930 760  
 [lucy@morton.com.au](mailto:lucy@morton.com.au)

#### Konstantin Melnikov

 0421 540 424  
 [konstantin@morton.com.au](mailto:konstantin@morton.com.au)

[morton.com.au](https://morton.com.au)



25/205 GREENWICH ROAD

GREENWICH

SCAPE Floor Planing Disclaimer: This floor plan is conceptual only. It is provided for illustrative purposes only and should not be relied upon. We make no guarantee as to the correctness of this plan. All interested parties should make and rely on their own enquiries in determining the accuracy of the information contained in this floor plan.