



# morton.

**Ermington** 206/24-32 Koorine Street

 2  2  1

Peacefully positioned in Ermington's foremost waterfront community, this stunning apartment offers a lifestyle of understated luxury throughout. Beautifully presented with clean architectural lines, this is the perfect home for the investor, downsizer or first-time owner seeking the ultimate in riverside living.

- Opening to the ambient light of a Northern aspect
- Flawlessly appointed with absolutely nothing to add
- Formal/casual entertaining spaces, winter garden
- Double bedrooms, built-ins, master has an ensuite
- Deluxe kitchen, stone benches and gas appliances
- Air conditioning, soaring ceilings and floating floors

### View

As advertised or by appointment

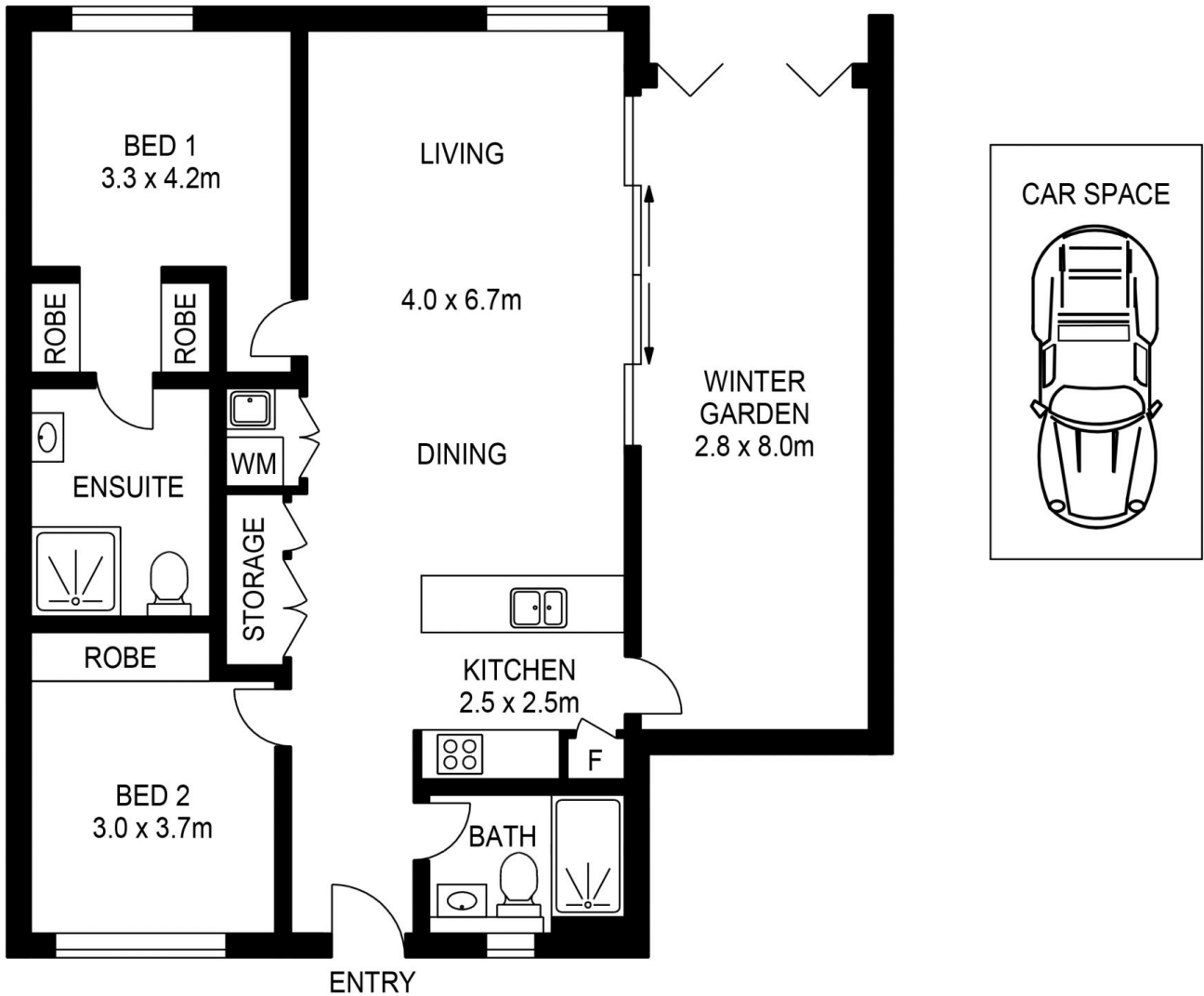
### Agent

**Dylan Choe**

 0416 932 977

 [dylanchoe@morton.com.au](mailto:dylanchoe@morton.com.au)

[morton.com.au](http://morton.com.au)



**LEVEL TWO**

APPROX. INT. AREA :104m<sup>2</sup>

APPROX. EXT.AREA : 13m<sup>2</sup>

**206/24-32 KOORINE STREET, ERMINGTON**



[www.assetphotographers.com.au](http://www.assetphotographers.com.au)

Please note these measurements are approximate only. The plans are intended as a rough guide for illustrative purposes. It is not warranted or guaranteed to be correct nor is it a part of the sale or rental contract.

