



morton.

Penrith 209/60 Lord Sheffield Circuit

 2  2  1

A dynamic location that offers quick and easy access to all of Penrith's attractions means this blue-chip two-bedroom apartment delivers lifestyle in all directions. It makes an instant impact with its generous interior design that combines space, light and elevated urban outlooks to provide a private retreat in the architectural Wildwood Apartments security building.

- Light and breezy design and 101sqm in/outdoor space
- Bright north aspect and large entertainment balcony
- Two bright double bedrooms both have balcony access
- Quality floorboards throughout living area and bedrooms
- Designer gas kitchen, with sleek AEG integrated fridge, freezer and microwave included and marble-look breakfast bar
- Security car space plus a lock-up storage cage on title
- Air conditioning, intercom entry and lift access
- Residents' rooftop terrace with BBQ area and panoramic mountain views

A new generation is discovering the magic of Penrith with its world-class shopping amenities, excellent café and dining


morton.com.au

View

As advertised or by appointment

Agent

David Lipman

 0409 663 535

 david@morton.com.au



SHEFFIELD QUARTER

THORNTON

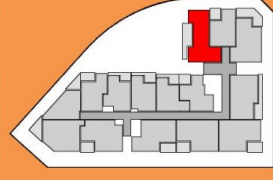
TWO BEDROOM APARTMENT

UNIT 2.09 LOT 31
UNIT 3.09 LOT 46
UNIT 4.09 LOT 61
UNIT 5.09 LOT 76

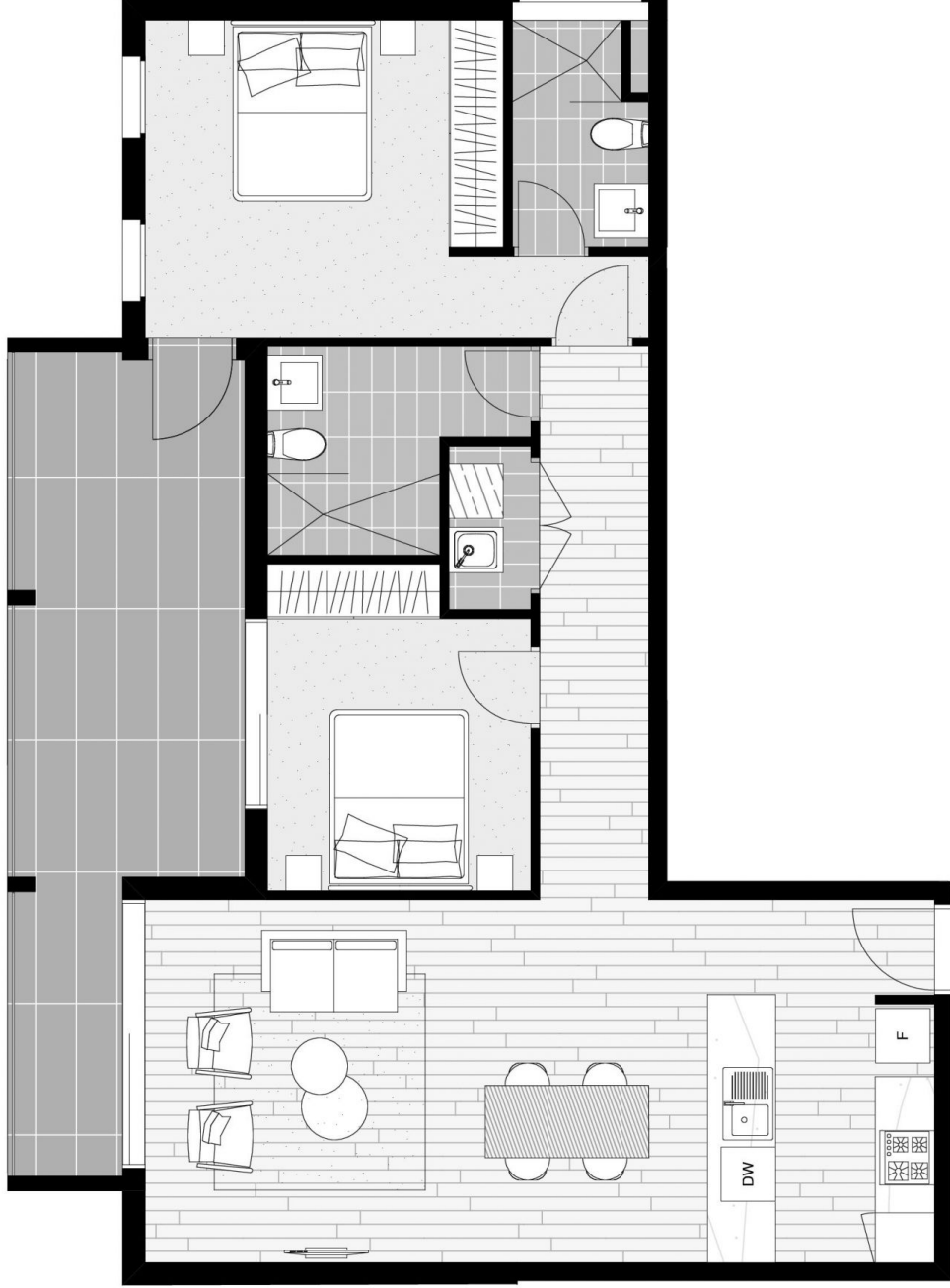
INTERNAL AREA: 80 m²
EXTERNAL AREA: 20 m²

TOTAL: 100 m²

PARKING: 1

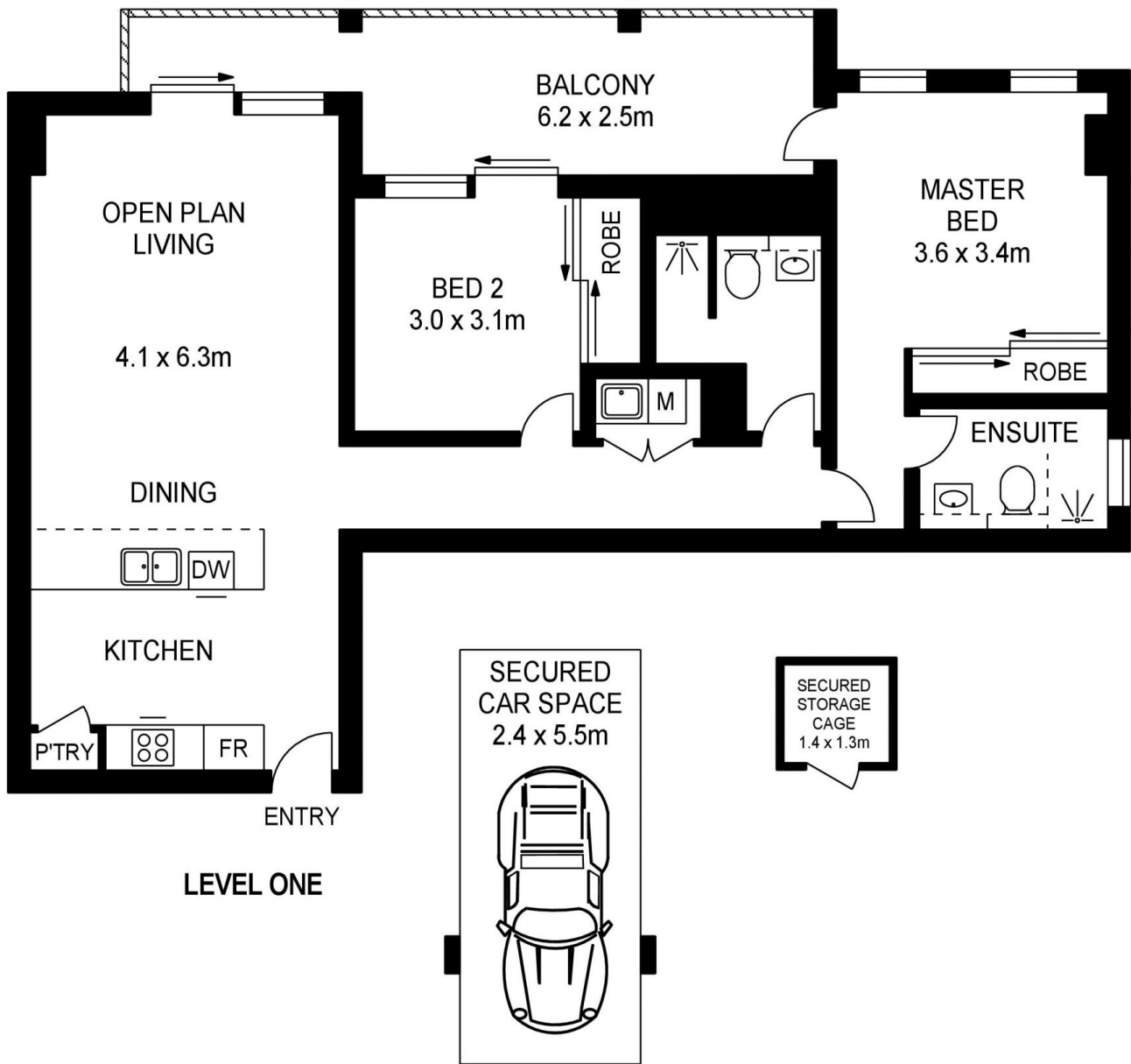


URBAN CBRE



All apartments subject to contract and availability. Images showing the building, interiors and views are computer generated prior to construction and indicative only. Dimensions, layouts, finishes and specifications are subject to change and may differ from those shown in this brochure. All measurements are to be confirmed. Furniture and plantings are for demonstrative purposes and are not included.





LEVEL ONE

APPROX INT. AREA : 80.70sqm
 APPROX EXT. AREA : 18.30sqm
 TOTAL AREA INCLUDING CAR SPACE : 114.20sqm
 & STORAGE CAGE

108/60 LORD SHEFFIELD CIRCUIT, PENRITH



www.assetphotographers.com.au

Please note these measurements are approximate only. The plans are intended as a rough guide for illustrative purposes. It is not warranted or guaranteed to be correct nor is it a part of the sale or rental contract.

