



# morton.

**Wentworth Point** 415/37 Amalfi Drive

 1  1  1

This is your opportunity to move into this split level one bedroom apartment, located in the Sorrento building in The Waterfront, only a short stroll from The Promenade and The Piazza. The Waterfront is located moments to Wentworth Point's retail precincts, Sydney Olympic Park main venues, transport links, Bicentennial Park and Millennium Parklands.

Property features include:

- Open plan living and dining area with direct balcony access
- Fully fitted kitchen with stainless steel appliances
- Generous size bedroom with extra spacious built-in wardrobe
- Bathroom with bathtub
- Internal laundry with dryer
- Split system air-conditioning unit
- Audio/visual security intercom
- Single parking with storage cage

**View**

As advertised or by appointment

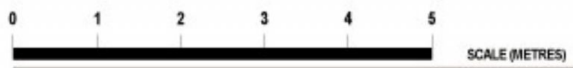
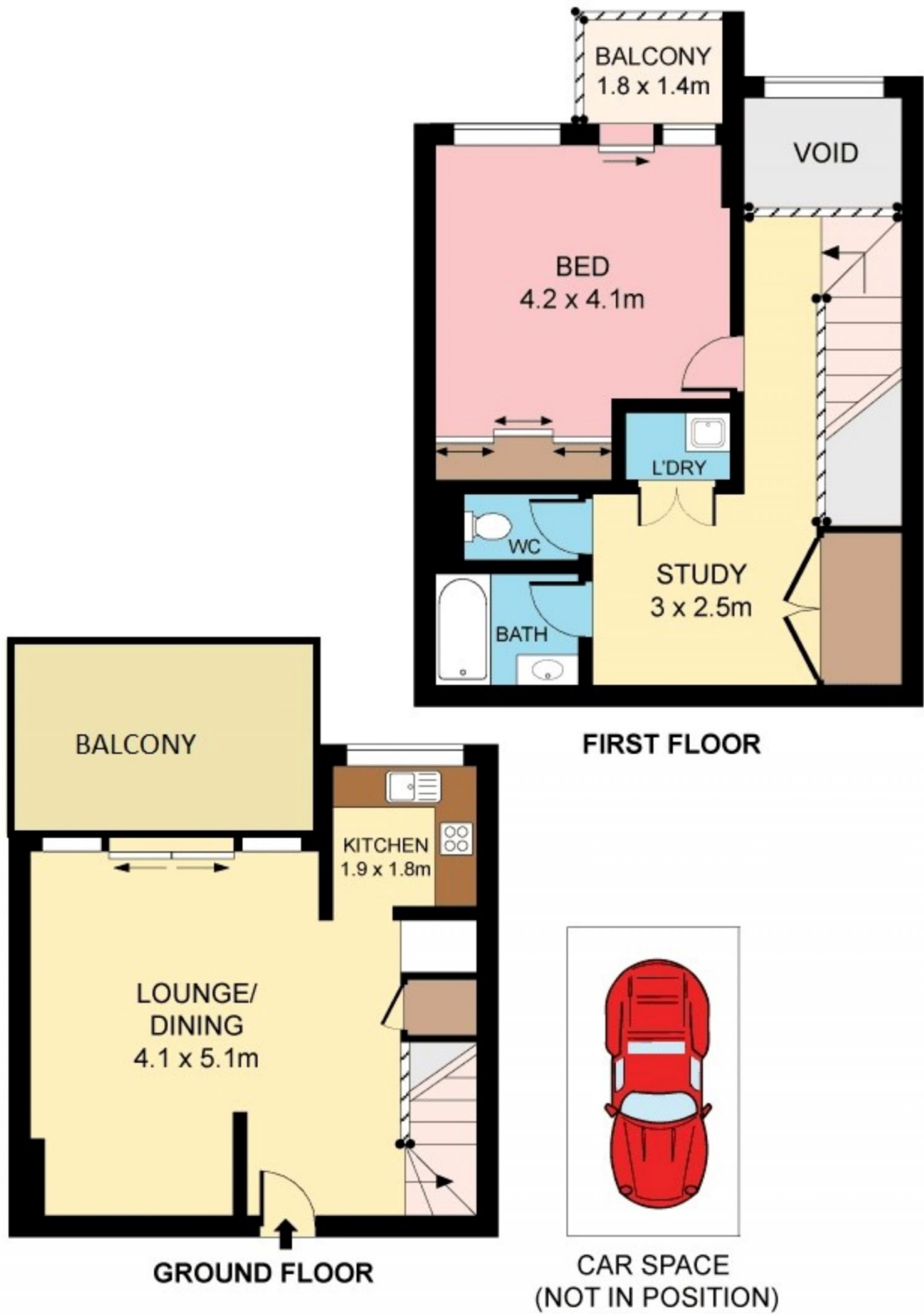
**Agent**

**Nevena Petrovic**

 0428 835 910

 nevena@morton.com.au

[morton.com.au](http://morton.com.au)



Plans shown are for presentation purposes only and are not part of any legal document or title. They are subject to errors, omissions, inaccuracies and should not be used as a sole and accurate reference. Interested parties should make their own inquiries using independent sources.