



**morton.**

**Wentworth Point** 127/27 Bennelong Parkway

 2  1  1

Well positioned in the Spinnaker building of the waterfront Mariners Cove complex, this two bedroom apartment has an abundance of natural light from its spacious entertainer's balcony, offering a serene unobstructed view overlooking Sydney Olympic Park and the Archery Centre. This is the perfect abode for the working professional looking for a tranquil resort style home, positioned by the waterside, with easy access to amenities. Mariners Cove features exclusive residents only swimming pools, gym and steam room.

Property features include:

- Open plan living and dining leading to entertainer's balcony
- Uninterrupted views of parklands
- Fully equipped kitchen with gas cooking and dishwasher
- Bedrooms with double built in wardrobes
- Reverse cycle air-conditioning
- Secure basement car parking
- Residents only access to Mariners Cove private beach, pool, gym, and sauna

**View**

As advertised or by appointment

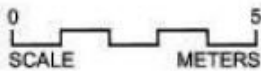
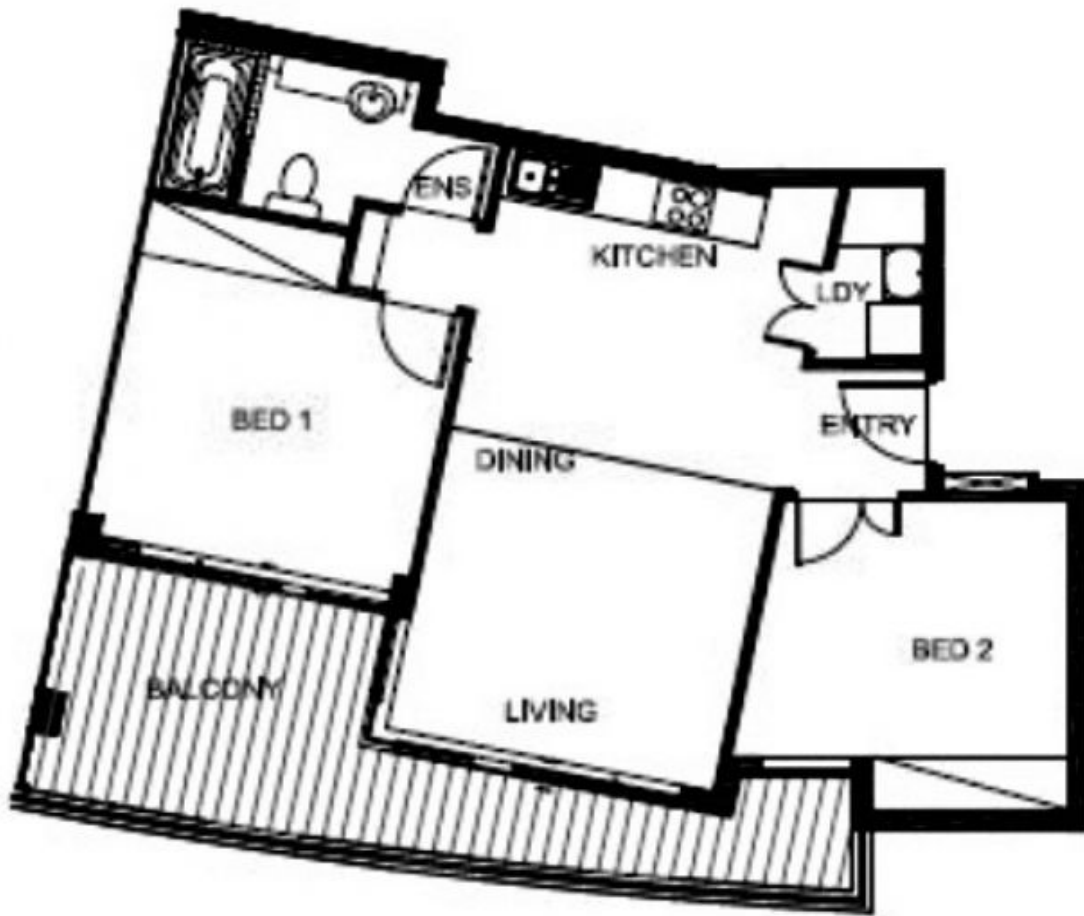
**Agent**

**Nevena Petrovic**

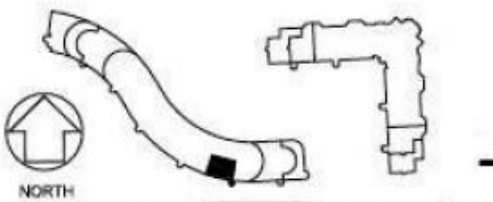
 0428 835 910

 nevena@morton.com.au

**morton.com.au**



**DISCLAIMER**  
 NO RESPONSIBILITY TAKEN FOR INFORMATION PROVIDED HEREIN.  
 INTERESTED PARTIES SHOULD RELY ON THEIR OWN ENQUIRIES  
 AND THE CONTRACT FOR SALE. CARPARK AREAS NOT INCLUDED.  
 REFER TO STRATA PLANS FOR ADDITIONAL INFORMATION.



**APARTMENT 127**

2 BEDROOM

INTERNAL AREA	61 sqm
EXTERNAL AREA	17 sqm
TOTAL AREA	78 sqm

# MARINERS COVE

RESIDENTIAL APARTMENTS