



# morton.

**Mosman** 402/116 Belmont Road

 2  2  2

Designed by award winning architects Bates Smart with elegant exterior finishes, each floor plan has been individually designed to maximise the intrinsic value of its position. Natural palettes in soft and rich tones are created by the quality choices sourced for this space.

- Well-proportioned light-filled living area
- Large terrace ideal for entertaining
- District Westerly views with stunning natural light
- Elegant kitchen with premium Miele appliances and gas cooking
- Calcutta marble counter tops and splashback
- Wide oak timber floors in living area
- Internal laundry with dryer and abundant storage throughout
- Ducted system reverse cycle air- conditioning
- Two secure car spaces and separate storage

### View

As advertised or by appointment

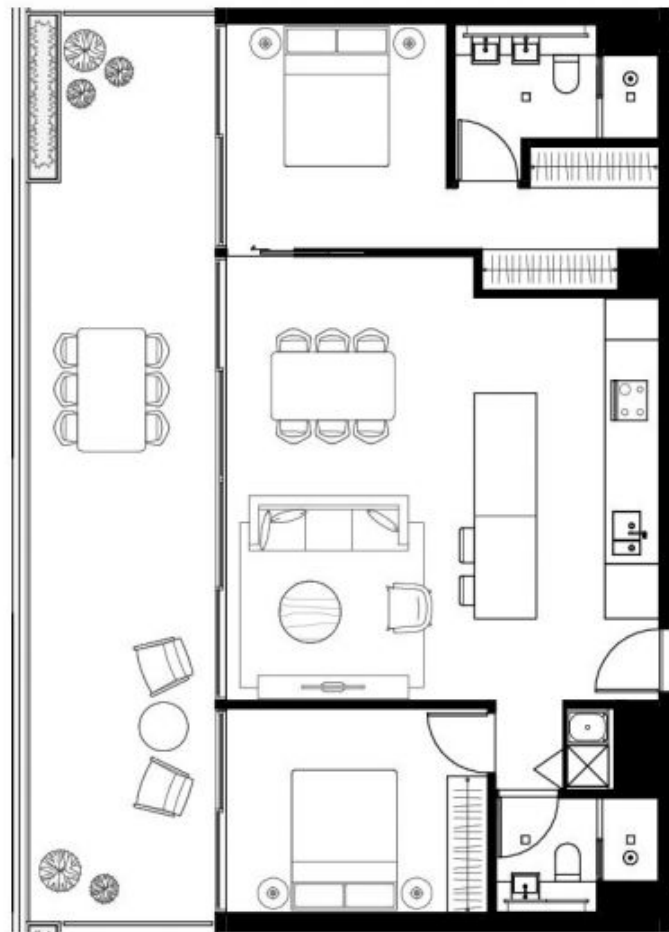
### Agent

**Sarah Fowell**

 0437 492 129

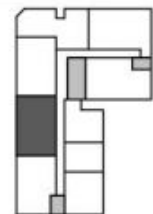
 sarah@morton.com.au

[morton.com.au](https://morton.com.au)



**APARTMENT** 4.02  
**LEVEL** Level 04  
**TYPE** 2BT06  
**UNIT AREA (sqm)**  
 Internal 80 m<sup>2</sup>  
 Balcony 37 m<sup>2</sup>  
 Total 117 m<sup>2</sup>  
**Sheet Number** A50.402 **Revision** [R]

**Legend:**  
 S- Storage



**DISCLAIMER:** Please note that the layout plan was produced prior to construction. The information is believed to be correct but is not guaranteed. Changes may be made during construction and dimensions, areas, fittings, finishes and specification are subject to change without notice in accordance with the provisions of the contract for sale. The furniture and furnishings depicted are not included with any sale and purchasers must refer to their contract for sale for the list of inclusions. The position of the furniture and furnishings should not be taken to be indicative of final positions of power points, tv connection points and the like. Prospective purchasers must rely on their own enquiries. All graphics including tile layout and balustrades and the like are indicative only. Bulkheads for services are not depicted.