

**morton.**

**Waterloo** 502/18 Amelia Street

 2  2  1

Located in the heart of Waterloo, just 3km from the CBD, the ORE development is eye-catching design with urban living at its best. Stylish eight level residential building maximises natural light and space for sophisticated living.

- Fantastic layout with over-sized balcony
- Generous size open plan living and dining area
- Stainless steel appliances and gas cook top with Wok burners
- Stunning floorboards throughout living spaces and wool carpets in bedrooms
- Security intercom access
- Secure underground car spaces
- Ensuite with bath tub

**View**

As advertised or by appointment

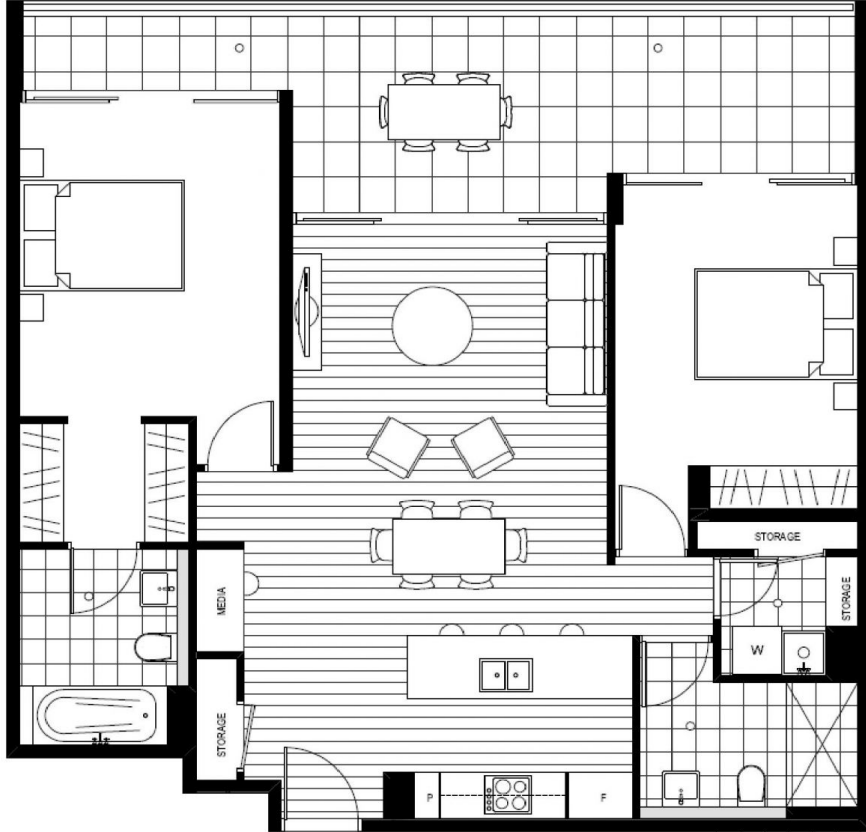
**Agent**

**Morton**



 [info@morton.com.au](mailto:info@morton.com.au)

[morton.com.au](http://morton.com.au)



0 2 4m

Disclaimer: 1. Please note, this layout plan was produced prior to construction. 2. The information is believed to be correct, but is not guaranteed. 3. Changes may be made during construction and dimensions, areas, fittings, finishes and specification are subject to change without notice in accordance with the provisions of the contract for sale. 4. The furniture and furnishings depicted are not included with any sale and purchasers must refer to their contract for sale for the list of inclusions. 5. The position of the furniture and furnishings should not be taken to be indicative of final positions of power points, or connection points and the like. 6. Prospective purchasers must rely on their own enquiries. 7. All graphics including tile layout and balustrades and the like are indicative only. 8. Bulkheads for services are not depicted. 9. The layout plan is at an unspecified scale.