



# morton.

**Penrith** 405/26C Lord Sheffield Circuit

 1  1  1

Lumina is an exciting precinct perfectly positioned within Penrith's emerging urban centre - a vibrant community to suit everyone and every lifestyle. A short walk leads you to Westfield's shops and entertainment and Penrith's famed dining precinct. Convenient transport and excellent schools are close by, as well as stunning parklands; from Ron Mulock Oval through to the Nepean River and the foothills of the Blue Mountains. Within the precinct you will find cafes ready to brew your morning coffee as you prepare for a day of work or a weekend family outing.

- 200 metres from Penrith train station
- European designed kitchen and bathroom, with mosaic tiles and a wall hung basin
- Air con to living
- Timber floorboards in the well-appointed living & kitchen areas
- Stone benchtop and splashback in the gas kitchen
- Exclusive resident-only rooftop garden, sky terrace and BBQ facilities with panoramic views to the picturesque Blue Mountains


[morton.com.au](https://www.morton.com.au)

### View

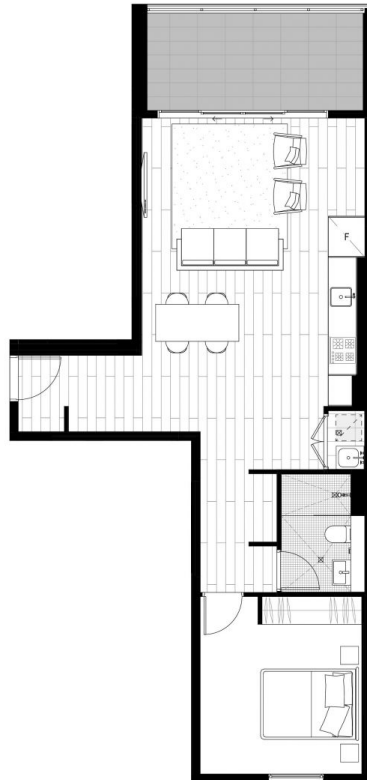
As advertised or by appointment

### Agent

**David Lipman**

 0409 663 535

 david@morton.com.au



# LUMINA

SHEFFIELD QUARTER

THORNTON

ONE BEDROOM  
APARTMENT

UNIT 205, 305, 405, 505, 605

INTERNAL AREA	62 m <sup>2</sup>
EXTERNAL AREA	10 m <sup>2</sup>

TOTAL	72 m <sup>2</sup>
-------	-------------------

PARKING	1
---------	---



NORTH

## URBAN

This floor plan has been prepared for marketing purposes only. All descriptions, dimensions, depictions and other details in this floor plan may not be to scale and may vary from the property as built. Your attention is drawn to the special conditions of the contract for sale of land. No third party has any authority to make or give any representation or warranty in relation to the property unless the representation or warranty is confirmed by Developer and included in the contract for sale of land.