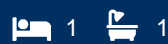




morton.

Sydney Level 12/38 Bridge Street



Perfectly positioned, this fabulous residence holds a central location in the heart of the CBD. Executives and city locals will know this is the ultimate inner city abode, offering the perfect investment opportunity, surrounded by world class attractions and local conveniences.

- 12th floor position with a northly aspect
- Generous open plan living and dining rooms
- Kitchen with granite bench tops, quality SMEG appliances and ample storage
- Bright and spacious master bedroom with mirrored built-ins
- Fully tiled bathroom and internal laundry with dryer
- Ducted air con throughout
- Intercom and secure lift access
- Concierge service

View

As advertised or by appointment

Agent

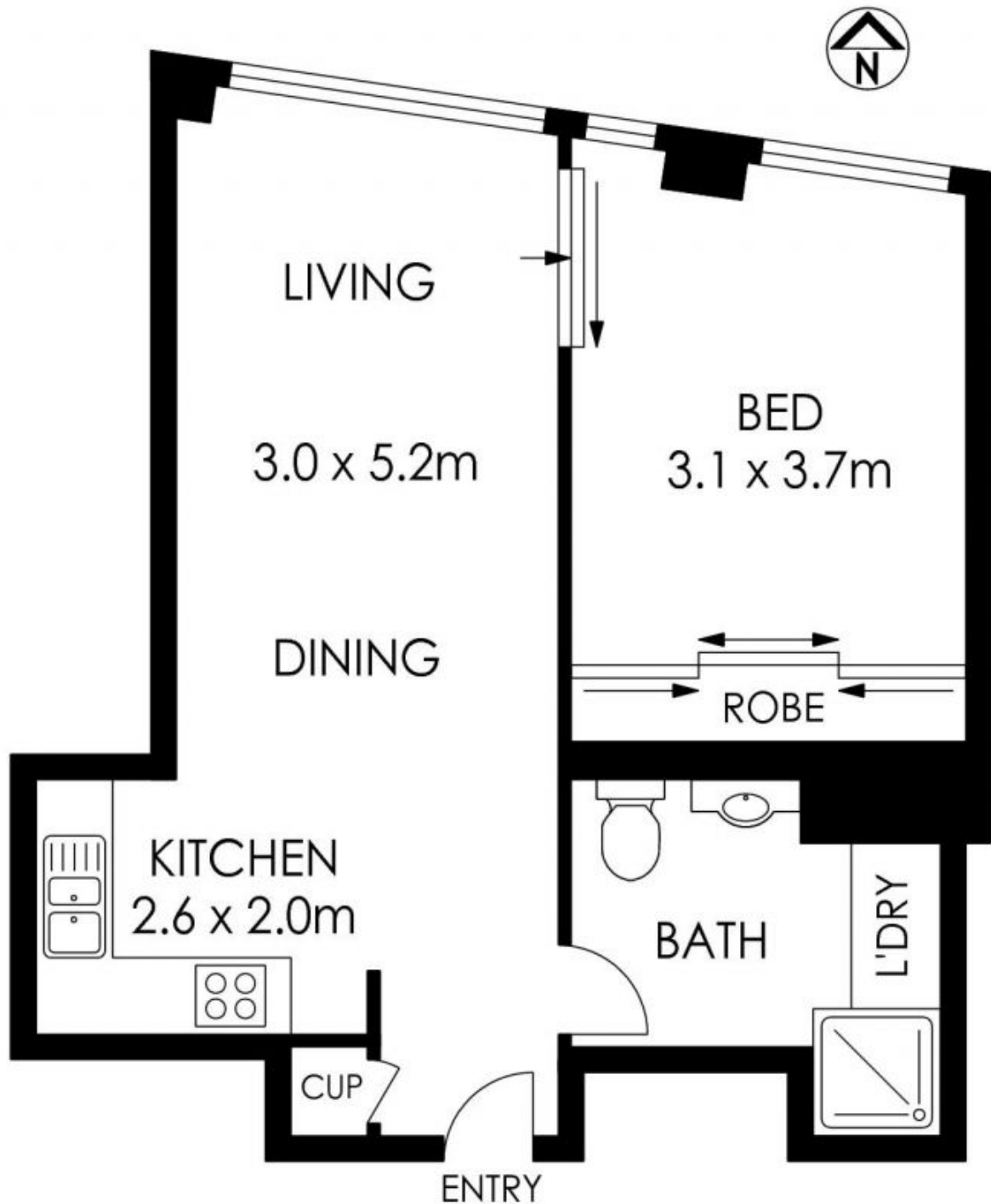
Morton RE



rentals@morton.com.au

morton.com.au

morton.



121 1/38 Bridge Street, Sydney

The information above is provided in good faith and has been provide to us from a variety of sources. We have not verified whether the information is accurate and do not have any belief one way or other in its accuracy. We do not accept any responsibility to any person for its accuracy and do no more than pass it on. All interested parties should rely on their own inquiries in order to determine whether or not this information is in fact accurate.

Floor Plan by www.squaremeter.com.au