



# morton.

**Kirrawee** 507/11 Village Place

🛏 2 🚗 1 🚗 1

Great opportunity to lease one of Kirrawee's finest and newest apartments in South Village, an iconic development in Sutherland Shire. Conveniently situated only a 180m walk to Kirrawee station, new shopping village right at your doorstep with Coles and Aldi supermarkets, eateries & cafes and childcare center. With easy access to the CBD, national parks and Cronulla Beach, South Village offers a unique luxury lifestyle.

- Generous open plan design with bright airy decor
- Quality designer gas kitchen with European appliances
- Bathroom has floor to ceiling tiles, mirrored vanity cabinet
- Spacious bedrooms with built-in wardrobe
- Lounge room with gas point and payTV points
- Large entertainer's balcony with gas point for BBQ
- Internal laundry with dryer, air-conditioning, NBN internet
- Security parking plus storage cage, audio intercom life access

### View

As advertised or by appointment

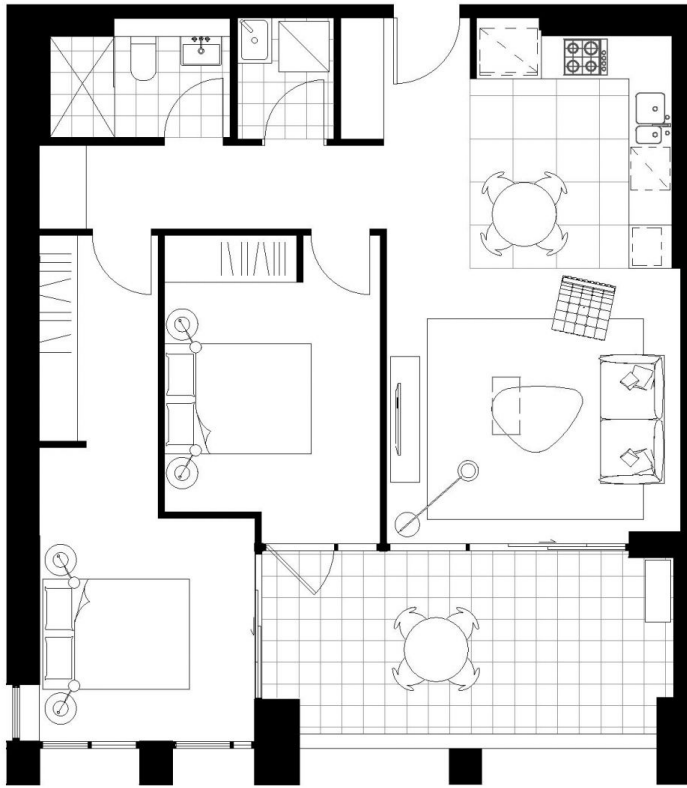
### Agent

**Lisa Xi**

📞 0401 311 667

✉ lisa@morton.com.au

[morton.com.au](http://morton.com.au)



# VIVID

## LEVEL 5

C5.07 LOT 239

2 BED 1 BATH

INTERNAL 72 Sqm

BALCONY 14 Sqm

**TOTAL 86 Sqm**



**Disclaimer:** This floor plan has been prepared for marketing purposes only. All dimensions, orientations, elevations and other details in this floor plan are not to scale and may vary from the property as built. Your attention is drawn to the special conditions of the contract for sale of land. No third party has any authority to make or give any representation or warranty in relation to the property unless the representation or warranty is contained in South Village Pty Ltd ACH 864 777024 and included in the contract for sale of land. Furniture shown is not included. 9/12/2021

[vividsouthvillage.com.au](http://vividsouthvillage.com.au)

South Village brought to you by

**PAYCE**



Marketed by

**BOSTON**  
MARKETING