



# morton.

**Sydney** 217/45-49 Shelley Street



A premier opportunity for the discerning investor or professional couple that seeks modern living in a boutique block of just 6, this warm and welcoming residence is well positioned in a highly recognised harbourside community little more than a stroll to the heart of the CBD.

- Well presented with contemporary finishes throughout
- With a well proportioned open lounge and dining area
- Bright master bedroom comes with a built-in wardrobe
- Designer kitchen, Corian benches, gas appliances
- Ducted air con, laundry, study nook and secure parking
- Opening to city views and a bright easterly perspective

#### View

As advertised or by appointment

#### Agent

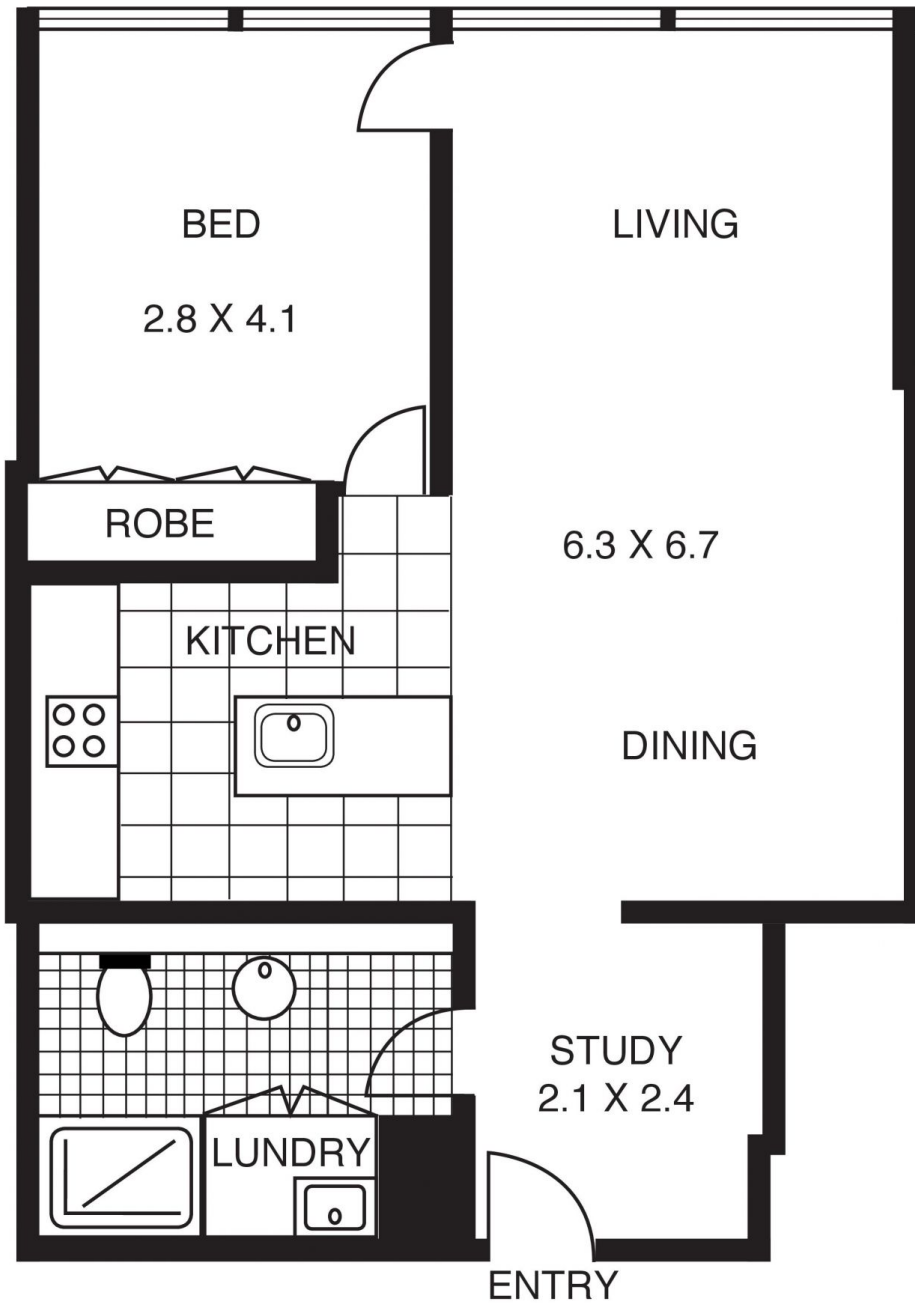
**Ettiene West**

📞 0410 593 749

✉️ ettiene@morton.com.au

[morton.com.au](http://morton.com.au)

SECURITY PARKING 6.7 X 3.0



SECOND FLOOR

217/49 SHELLEY STREET  
SYDNEY NSW 2000